

Geno-Sen's LEPTOSPIRA

Real Time PCR Kit

Quantitative

For use with QIAGEN Rotor-Gene Q, Rotor-Gene 6000, ABI-7500, StepOne, StepOne Plus, QuantStudio™, Roche LightCycler®480, Bio-Rad CFX96™, I cycler, Analytik Jena qTOWER 3, Exicycler 96 (Bioneer), AriaMx (Agilent Technology) & Slan 48, ALTA 48, INSTA Q 96, etc.,



PACK INSERT

Revised July 2016



Genome Diagnostics Pvt. Ltd.

(An ISO 13485:2012, 9001:2008 Certified Company)

		<p>Genome Diagnostics Pvt. Ltd Up Mohal Naryal, Khasra No. 427, Old Timber Depot Road, Parwanoo, Dist Solan Himachal Pradesh 173220 Ph: +91 9810037653 Fax: 01792-234286 Email: genome24@rediffmail.com</p>		
<table border="1"><tr><td>EC</td><td>REP</td></tr></table>	EC	REP	<p>EMERGO EUROPE Prinsessegracht 20,2514 AP, The Hague The Netherlands</p>	
EC	REP			

Geno-Sen's LEPTOSPIRA Real Time PCR Kit

Table of Contents

1.	Contents of Kit.	Page 3
2.	Storage of the kit.	Page 3
3.	LEPTOSPIRA information	Page 4
4.	Precautions for PCR	Page 6
5.	Additionally required Materials & Devices	Page 6
6.	Principle of Real Time PCR	Page 6
7.	Description of the Product.	Page 7
8.	Procedure	Page 7
	8.a DNA Extraction	Page 7
	8.b Inhibition Control	Page 8
	8.c Quantitation	Page 8
	8.d Preparation for PCR amplification	Page 9
	8.e Programming of the Rotor Gene 2000/3000	Page 11
	8.f Programming of the Rotor Gene 6000	Page 19
9.	a) Generated Data Interpretation & Analysis 2000/3000	Page 28
	b) Generated Data Interpretation & Analysis 6000	Page 29
10.	a) Trouble shooting 2000/3000	Page 31
	b) Trouble shooting 6000	Page 32
11.	Specifications	
	11.a Sensitivity & Reproducibility	Page 33
	11.b Specificity	Page 33
12.	Warranty	Page 34
13.	Limitations of product use.	Page 35
14.	List of GENO-SEN'S range of Real Time PCR kits	Page 36

Geno-Sen's LEPTOSPIRA Real Time PCR Kit

LEPTOSPIRA Geno-Sen's Real Time PCR Kit

1. Contents of the Kit:

Color Code	Contents	REF 9111401 100 rxns	REF 9111402 50 rxns	REF 9111403 25 rxns
R1 Blue	LEPTOSPIRA Super mix.	25 rxns x 4 Vials	25 rxns x 2 Vials	25 rxns x 1 Vials
R2 Yellow	Mg Sol RT.	1 Vial	1 Vial	1 Vial
LEPTO-S1 Red	LEPTOSPIRA Standard 1 <i>1 X 10⁵ copies/μl</i>	1 Vial of 300μl	1 Vial of 300μl	1 Vial of 300μl
LEPTO-S2 Red	LEPTOSPIRA Standard 2 <i>1 X 10⁴ copies/μl</i>	1 Vial of 300μl	1 Vial of 300μl	1 Vial of 300μl
LEPTO-S3 Red	LEPTOSPIRA Standard 3 <i>1 X 10³ copies/μl</i>	1 Vial of 300μl	1 Vial of 300μl	1 Vial of 300μl
LEPTO-S4 Red	LEPTOSPIRA Standard 4 <i>1 X 10² copies/μl</i>	1 Vial of 300μl	1 Vial of 300μl	1 Vial of 300μl
LEPTO-S5 Red	LEPTOSPIRA Standard 5 <i>1 X 10¹ copies/μl</i>	1 Vial of 300μl	1 Vial of 300μl	1 Vial of 300μl
W White	Molecular Grade Water.	1 Vials of 1 ml	1 Vial of 1 ml	1 Vial of 1 ml
IC-1 (R3) Green	IC-1 RG (R3)	1 Vial of 1 ml	1 Vial of 1 ml	1 Vial of 1 ml

R = Reagents

S = Quantitation Standards

W = Molecular Grade Water.

All Vials have Color Coder tops to distinguish between different reagents.

2. Storage of the Kit.

All the reagents of the kit should be stored at -20°C and is stable till expiry at this temperature. Repeated thawing and freezing (> 3x) should be avoided, as this may reduce the sensitivity of the assay. If the kit is to be used only occasionally, the reagents should be frozen in aliquots. Storage at +4°C is not recommended & should not exceed a period of 2 hours in any case.

3. LEPTOSPIRA Information

Application

Geno-Sen's LEPTOSPIRA Real Time PCR Kit

Leptospirosis is a disease caused by pathogenic spirochetes of the genus *Leptospira*. It is considered the most common zoonosis in the world. Its distribution is worldwide (sparing the polar regions), occurring with the greatest frequency in the tropics.

Humans and a wide range of animals, including mammals, birds, amphibians, and reptiles are affected. However, humans rarely are chronic carriers and, therefore, are considered accidental hosts. Transmission occurs by direct contact with the body fluid of an acutely infected animal or by exposure to soil or fresh water contaminated with the urine of an animal that is a chronic carrier.

Human disease is often acquired via contact with fresh water contaminated by bovine, rat, or canine urine and may be encountered with increasing interest in adventure travel or vacations that involve water sports or hiking. Leptospirosis in humans is characterized by an acute febrile illness followed by mild self-limiting sequelae or an even more severe, and often fatal, multiorgan involvement. It was first described by Larrey in 1812 of *fièvre jaune* among Napoleon's troops at the siege of Cairo. It initially was thought to be related to the plague but not as contagious. Throughout the remainder of the 19th century, the illness was known in Europe as "bilious typhoid."

A little over 100 years ago, Adolph Weil published his historic paper describing the most severe form of infection that would be later known as Weil disease.

In 1907, special staining techniques were used to confirm that a spirochete was responsible for this illness. A postmortem examination of the kidney of a person with Weil disease contained a spiral organism with hooked ends, which first was named *Spirochaeta interrogans*.

The leptospire is thin, coiled, gram-negative, aerobic organisms 6-20 cm in length. They are motile, with hooked ends and paired axial flagella (one on each end), enabling them to burrow into tissue. Motion is marked by continual spinning on the long axis. They are unique among the spirochetes in that they can be isolated on artificial media.

Leptospire belongs to the order Spirochaetales and the family Leptospiraceae. Traditionally, the organisms are classified based on antigenic differences in the lipopolysaccharide envelopes that surround the cell wall. Serologic detection of these differences, therefore, identifies serovars within each species. Based on this system, 2 species exist within the genus *Leptospira*—the pathogenic *Leptospira interrogans*, with at least 218 serovars, and the nonpathogenic, free-living, saprophytic *Leptospira biflexa*, which has at least 60 serovars.

Current studies that classify the organisms based on DNA relatedness identify at least 7 pathogenic species of leptospire. However, organisms that are identical serologically may be different genetically, and organisms with the same genetic makeup may be different serologically. Therefore, some authors feel that the traditional serologic system is the most useful from a diagnostic and epidemiologic standpoint.

Geno-Sen's LEPTOSPIRA Real Time PCR Kit

Although not fully understood, leptospires are thought to enter the host through abrasions in healthy skin, through sodden and waterlogged skin, directly through intact mucus membranes or conjunctiva, through the nasal mucosa and cribriform plate, through the lungs (after inhalation of aerosolized body fluid), or through the placenta during pregnancy. Virulent organisms in a susceptible host gain rapid access to the bloodstream through the lymphatics, resulting in leptospiremia and spread to all organs. The incubation period usually is 5-14 days, but it has been described from 72 hours to a month or more.

If the host survives the acute infection, septicemia and multiplication of the organism persist until the development of opsonizing immunoglobulin in the plasma, followed by rapid immune clearance. However, after clearance from the blood, leptospires remain in immunologically privileged sites, including the renal tubules, brain, and anterior chamber of the eye, for weeks to months. In humans, leptospires in the renal tubules and resulting leptospiruria rarely persist longer than 60 days.

During acute infection, leptospires are thought to multiply in the small blood vessel endothelium, resulting in damage and vasculitis. The major clinical manifestations of the disease are felt to be secondary to this mechanism, which can affect nearly any organ system.

- In the kidneys, interstitial nephritis, tubular necrosis, and impaired capillary permeability, as well as the associated hypovolemia, result in renal failure.
- Liver involvement is marked by centrilobular necrosis and Kupffer cell proliferation, with hepatocellular dysfunction.
- Pulmonary involvement is secondary to alveolar and interstitial vascular damage resulting in hemorrhage.
- The skin is affected by epithelial vascular insult.
- Skeletal muscle involvement is secondary to edema, myofibril vacuolization, and damage to vessels.
- The damage to the vascular system as a whole can result in capillary leakage, hypovolemia, and shock.

Clinical manifestations of the disease after the acute infection are the result of the inflammatory response, as well as action of the remaining organisms in the aqueous humor.

The mortality rate in severe leptospirosis has been described as ranging from 5-40%. The mild form of the illness rarely is fatal, and an estimated 90% of cases fall into this category. Elderly and immuno compromised people have the highest risk of mortality overall.

Samples which can be used for Extraction: Serum, plasma, whole blood, Urine etc.

4. Precautions for PCR

The following aspects should always be taken care of:

Geno-Sen's LEPTOSPIRA Real Time PCR Kit

- Store positive material (Specimens, Standards or amplicons) separately from all other reagents and add it to the reaction mix in a separate facility.
- Thaw all components thoroughly at room temperature before starting the assay.
- When thawed, mix the components and centrifuge briefly.
- Work quickly on ice or in the Cooling Block.
- All the reagents including the NTC (except for standards & specimens) should be mixed & dispensed in pre-mix area.
- All the standards & specimens should be mixed & dispensed in extraction area.
- Use pipette tips with filters only.
- Always use disposable powder-free gloves

5. Additionally Required Materials and Devices

- DNA isolation kit (see **8.a. DNA extraction**)
- 0.2 ml PCR tubes for use with 36-well rotor (Corbett Research, Cat.-Nr.: SE-1003F) alteDNAtively 0.1 ml PCR tubes for use with 72-well rotor (Corbett Research, Cat.-Nr.: ST-1001)
- Micro Pipettes Variable Volume 2-20µl, 10-100µl, 100-1000µl,
- Sterile pipette tips with aerosol barrier 2-20µl, 10-100µl, 100-1000µl,
- Disposable powder-free gloves
- Vortex mixer
- Centrifuge Desktop with rotor for 1.7 ml reaction tubes
- *Rotor Gene™ 2000/3000* or *Rotor Gene™ 6000*, Corbett Research (The Real time PCR Instrument)

6. Principle of Real-Time PCR

The robust assay exploits the so-called Taqman principle. During PCR, forward and reverse primers hybridize to a specific sequence product. A TaqMan probe, which is contained in the same reaction mixture and which consists of an oligonucleotide labeled with a 5'-reporter dye and a downstream, 3'-quencher dye, hybridizes to a target sequence within the PCR product. A Taq polymerase which possesses 5' - 3' exonuclease activity cleaves the probe. The reporter dye and quencher dye are separated upon cleavage, resulting in an increase in fluorescence for the reporter.

Geno-Sen's LEPTOSPIRA Real Time PCR Kit

Thus, the increase in fluorescence is directly proportional to the target amplification during PCR.


7. Description Of the Product.

The **Geno-Sen's LEPTOSPIRA PCR** Reagents constitute a ready to use system for detection and quantification of LEPTOSPIRA using Polymerase chain reaction (PCR) in the Rotor Gene 2000/3000/6000 (Corbett Research). *The Specific Master mix* contains reagents and enzymes for the specific amplification of LEPTOSPIRA and for the direct detection of the specific amplicon in fluorescence channel Cycling A.FAM of the *Rotor Gene 2000/3000/6000 & the Reference gene* on Cycling A. Joe. External positive Standards (LEPTOSPIRA S 1-5) are supplied which allow the determination of the gene load. For further information, please refer to section 8.c Quantitation.

8. Procedure

8.a DNA Extraction

DNA Extraction kits are available from various manufacturers. Sample volumes for the DNA Extraction procedure depend on the protocol used. Please carry out the DNA Extraction according to the manufacturer's instructions. The recommended Extraction kits are the following:

Sample Material	Nucleic Acid Isolation Kit	REF Cat. Num.	
Serum or plasma, whole blood, Urine.	Geno Sen's® Genomic DNA Extraction Mini Kit — for DNA purification	98021 or 98022	Genome Diagnostics Pvt. Ltd. India
	QIAamp Blood DNA Mini extraction Kit (50)	51104	QIAGEN
	Suitable Extraction kit which give a higher yield.		

Above Kits for evaluated in conjunction with the **Geno Sen's® Leptospira Real Time PCR RG Kit on the Rotor Gene 3000/6000..** However the sample size was limited for this study hence for all practical purposes all the validations were conducted with the **Geno Sen's® Genomic DNA Extraction Mini Kit — for DNA purification.**

However the customer can use their own extraction systems depending on how good the yield is. Always use an extraction kit with a higher DNA yield.

Blood collection tubes coated with anticoagulants may inhibit the PCR, However these inhibitors will be eliminated by the use of the isolation kits given above. It is recommended to avoid the usage of heparin blood.

Geno-Sen's LEPTOSPIRA Real Time PCR Kit

When using Extraction protocols with ethanol-containing washing buffers, please carry out an additional centrifugation step before the elution to remove any remaining ethanol. This prevents possible inhibition of PCR.

The *LEPTOSPIRA Rotor Gene PCR Reagents* should not be used with phenol based isolation methods.

8.b Inhibition Control:

Inhibition Control Gene allows the user to determine & control possible PCR inhibition. The Inhibition Control gene reagents are built in the premix provided and need not be run separately. There is no need to add internal control Gene in the reaction mix which has been provided as IC-1 RG (R3). To add the IC Gene 0.5 µl/rxn of R3 is added to the premix as shown in the Figure 4 & 5. The results can be visualized in the Joe channel. However if there is a need for the Internal control to be used as an extraction efficiency control, then 5 µl of R3 i.e. Inhibition control should be added to each sample before adding the Buffer MBD in the extraction process.

However in such a case, the IC-1 (R3) should not be mixed with the pre-mix as described above & instead 0.5 µl/rxn Molecular Grade water should be added to the pre-mix.

Also Note that in such a case there will be no amplification of Internal control in the Joe Channel in the NTC, & Standards. There will only be amplification in the Joe Channel in the Samples to which the IC-1 (R3) has been added before extraction.

Whereas if the IC-1 (R3) is added to the premix then there will be amplification in Joe Channel in all the samples, standards & NTC.

8.c Quantitation

The quantitation standards provided in the kit (*LEPTOSPIRA S 1-5*) are treated in the same way as extracted samples and the same volume is used i.e. (10µl) instead of the sample. To generate a standard curve in the *RotorGene™ 2000/3000/6000*, all 5 Standards should be used as defined in the menu window *Edit Samples* of the *RotorGene™* software. The same should also be defined as standards with the specified concentrations (see *RotorGene™* Manual). The standard curve generated as above can also be used for quantitation in subsequent runs, provided that at least one standard is used in the current run. For this purpose, the previously generated standard curve needs to be imported (see *Rotor Gene™ 2000/3000/6000 Manual*).

[Geno-Sen's LEPTOSPIRA Real Time PCR Kit](#)

However, this quantitation method may lead to deviations in the results due to variability between different PCR runs & due to varying Reaction efficiencies.

Attention: The standards are defined as copies/ μ l. The following formula has to be applied to convert the values determined using the standard curve into Copies/ml of sample material:

$$\text{Result (Copies/ml)} = \frac{\text{Result (Copies/\mu l)} \times \text{Elution Volume (\mu l)}}{\text{Sample Volume (ml)}}$$

Or else direct conversion can be done keeping in mind the starting volume of the sample & the final eluted Volume e.g.

If the starting volume of the sample while using the **Geno Sen's®** Genomic DNA Extraction Mini Kit is 200 μ l & the final Eluted Volume is 60 μ l then to obtain the direct values i.e. Copies/ml for the patient samples the following values for the standards can be fed directly into the operating software which is again based on the above formula and will yield direct conversion of per ml of patient sample data.

S1: 10 ⁵ Copies / μ l =	30000000 Copies/ml
S2: 10 ⁴ Copies / μ l =	3000000 Copies/ml
S3: 10 ³ Copies / μ l =	300000 Copies/ml
S4: 10 ² Copies / μ l =	30000 Copies/ml
S5: 10 ¹ Copies / μ l =	3000 Copies/ml

If the starting volume of the sample while using the Qiagen QIAamp DNA Mini extraction kit is 200 μ l & the final Eluted Volume is 50 μ l then to obtain the direct values i.e. copies/ml for the patient samples the following values for the standards can be fed directly into the operating software which is again based on the above formula and will yield direct conversion of per ml of patient sample data.

S1: 10 ⁵ Copies/ μ l =	25000000 Copies/ml
S2: 10 ⁴ Copies / μ l =	2500000 Copies/ml
S3: 10 ³ Copies / μ l =	250000 Copies/ml
S4: 10 ² Copies / μ l =	25000 Copies/ml
S5: 10 ¹ Copies / μ l =	2500 Copies/ml

Preparation for PCR

8. d. Preparation for PCR amplification:

Geno-Sen's LEPTOSPIRA Real Time PCR Kit

First make sure that the Cooling Block (accessory of the *Rotor Gene™*, Corbett Research) is pre-cooled to +4°C in a Refrigerator or Deep Freezer. Place the desired number of PCR tubes into the Cooling Block. Make sure that the tubes for standards & at least one negative control (*Water, PCR grade*) are included per PCR run. To generate a standard curve, use all supplied Standards (*LEPTOSPIRA S 1-5*) for each PCR run. Before each use, all reagents need to be thawed completely and mixed (by pipetting or by brief vortexing).

Please follow the pipeting scheme mentioned below for each sample depending upon the number of samples a mix can be prepared as follows. Each sample.

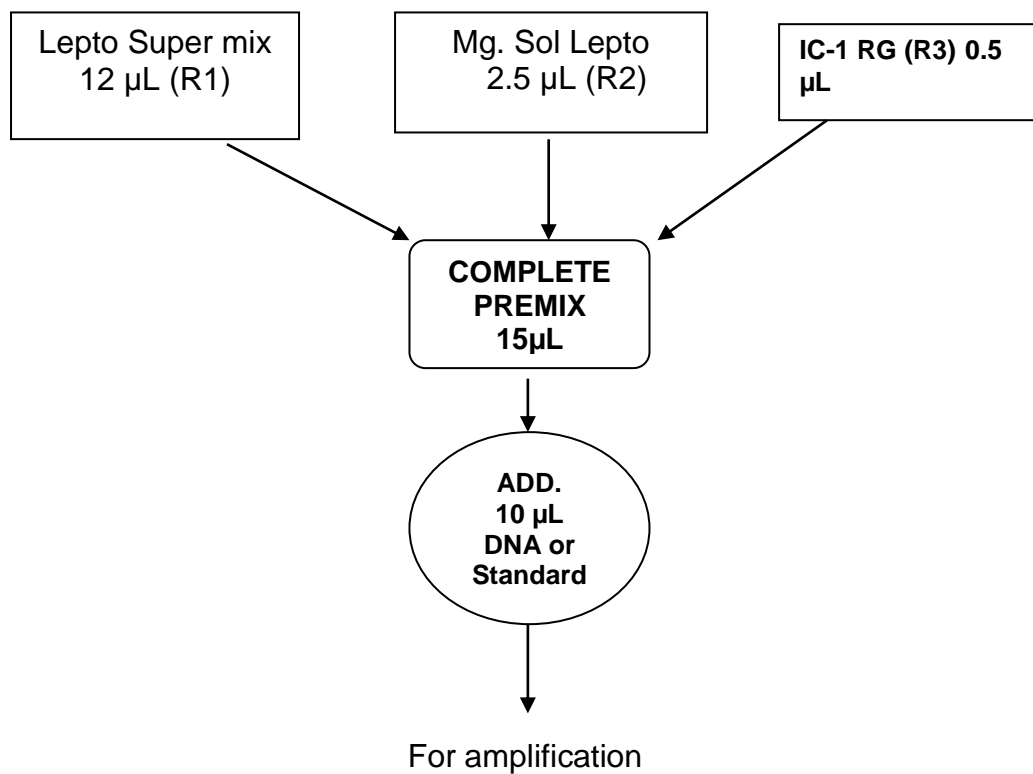


Fig. 4.

Depending upon the number of samples the following pipetting scheme can be followed. e.g. for 10 rxns.

LEPTOSPIRA MASTER MIX	1 rxns.	10 rxns.
LEPTOSPIRA Super Mix (R1)	12 µL	120 µL
LEPTOSPIRA Mg Sol. (R2)	2.5 µL	25 µL
IC-1 RG (R3)	0.5 µL	5 µL
Total	15µL	150µL

[Geno-Sen's LEPTOSPIRA Real Time PCR Kit](#)

Fig. 5.

Pipette 15 µl of the Master Mix into each labelled PCR tube. Then add 10 µl of the earlier extracted DNA to each sample tube and mix well by pipeting up and down. Correspondingly, 10 µl of the Standards (LEPTOSPIRA S1-5) must be used as a positive control and 10 µl of water (*Water, PCR grade*) as a negative control. Close the PCR tubes and transfer the LEPTOSPIRA tubes into the rotor of the *RotorGene™* instrument. The *RotorGene™* software versions 5.0.53 and higher require a Locking Ring (accessory of the *RotorGene™*, Corbett Research) to be placed on top of the rotor to prevent accidental opening of the tubes during the run.

8.e. Programming the *RotorGene™* 2000/3000

The *RotorGene™* 2000/3000 PCR program for the detection of LEPTOSPIRA can be divided into following steps:

- A. Setting of general assay parameters & reaction volume
- B. Thermal Profile & Calibration
- C. Cycling profile/ & Initial activation of the Hot Start enzyme
- D. Cycling for Amplification of DNA
- E. Adjustment of the sensitivity of the fluorescence channels
- F. Starting of the *Rotor Gene™* run

Program the *RotorGene™* 2000/3000 for these 5 steps according to the parameters shown in Fig. 6-20. All specifications refer to the *RotorGene™* software version 6.0.33. Please find further information on programming the *RotorGene™* in the *RotorGene™* 2000/3000 *Operator's Manual*,. In the illustrations these settings are shown by arrows

Setting of general assay parameters & Reaction volume.

First, confirm whether the PCR tubes used are No Domed PCR tubes by clicking in the box as shown in the figure. Please note that tubes with domes cannot be used in Rotor gene hence click in the box as shown below.

Geno-Sen's LEPTOSPIRA Real Time PCR Kit

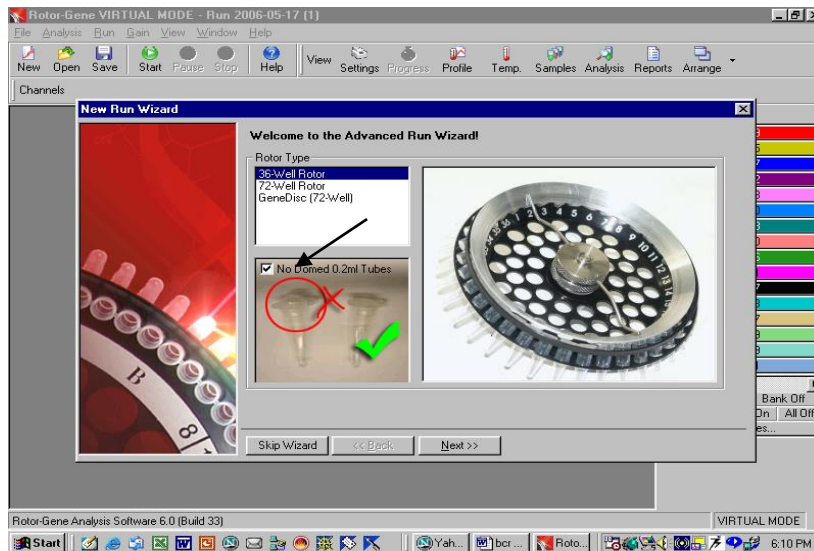


Fig. 6.

Confirmation of Reaction Volume as follows.

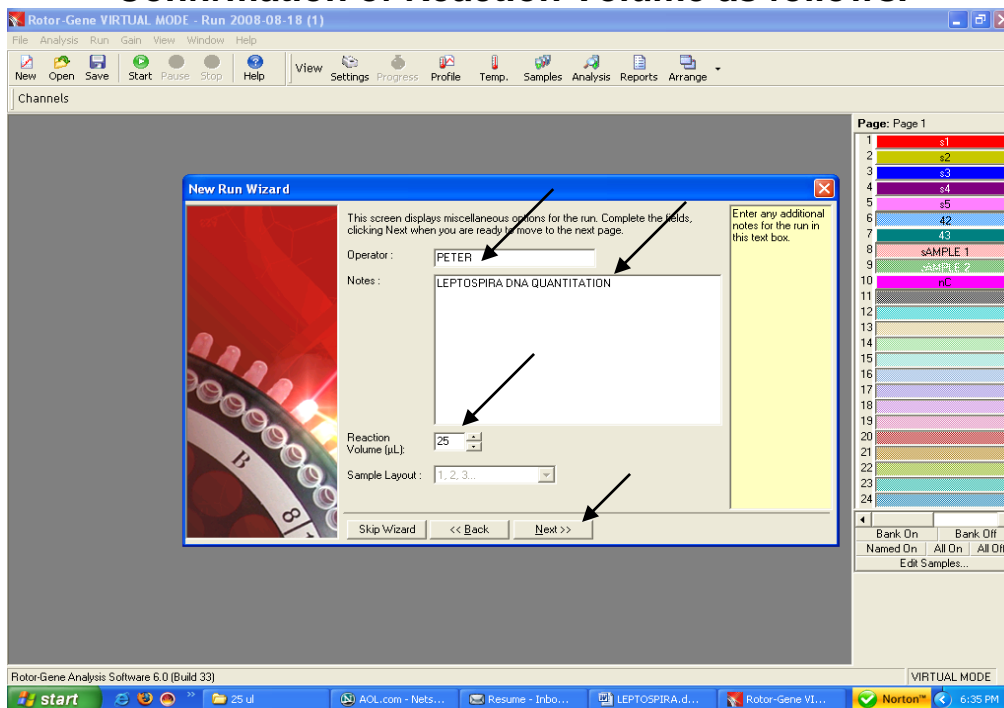


Fig. 7. Setting of general assay parameters.

- Please click on the volume buttons to make sure that 25 μ l is reflected in the window as shown above.
- Then click next and a new window will open as shown below.

THERMAL PROFILE & CALIBRATION:

Here the thermal profile for the assay will be defined.

Geno-Sen's LEPTOSPIRA Real Time PCR Kit

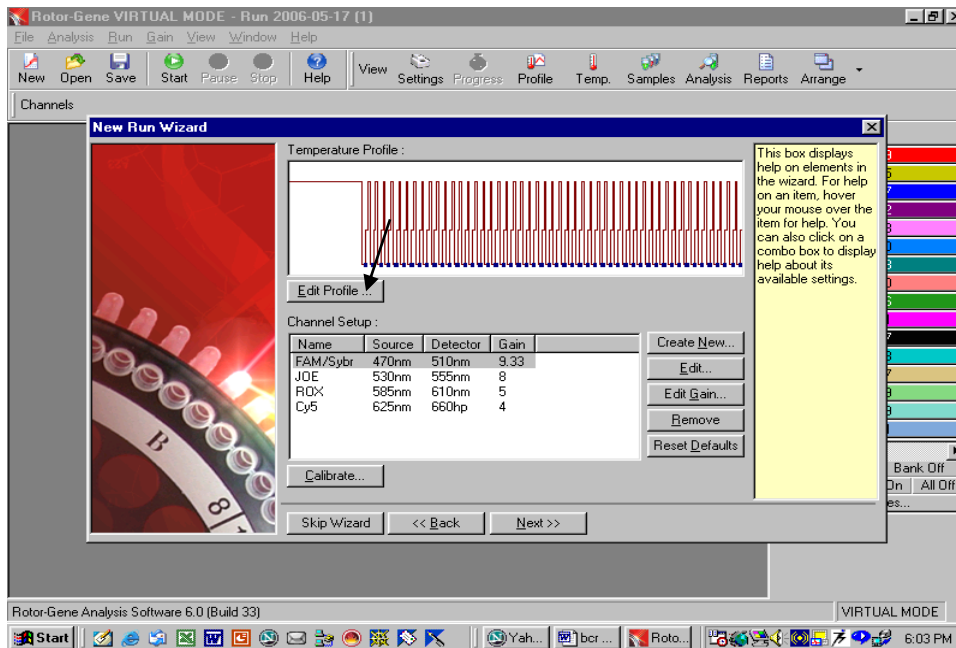


Fig. 8.

Programming the temperature profile is done by activating the button *Edit Temperature Profile* in the next *New Experiment Wizard* menu window as shown above.

CYCLING PROFILE: Hold 95°C for 10 minutes as below

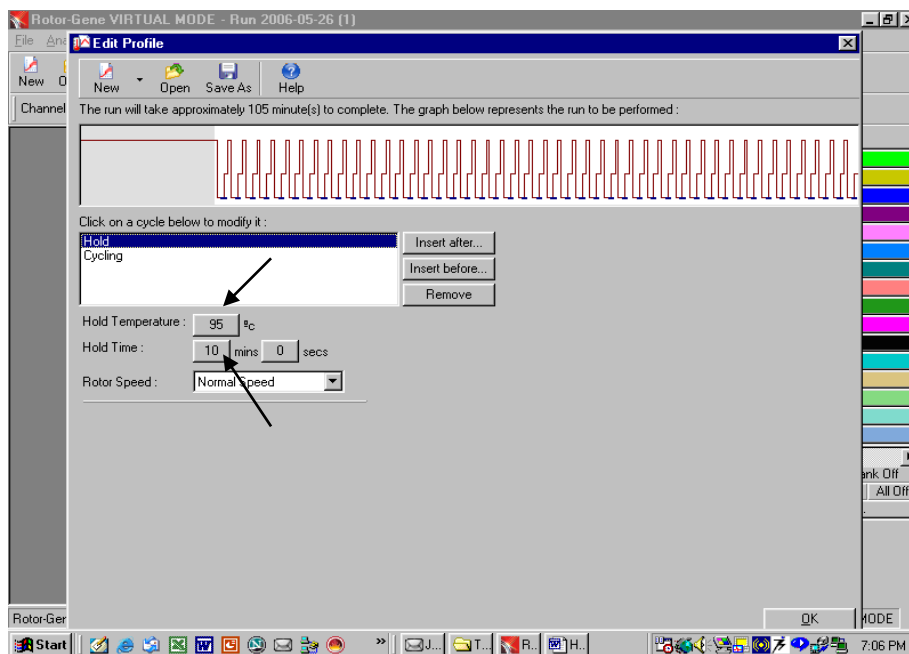


Fig. 9. Initial activation of the Hot Start enzyme.

Setting up of denaturation step in the cycling profile as depicted below i.e.

95°C for 15 seconds.

Geno-Sen's LEPTOSPIRA Real Time PCR Kit

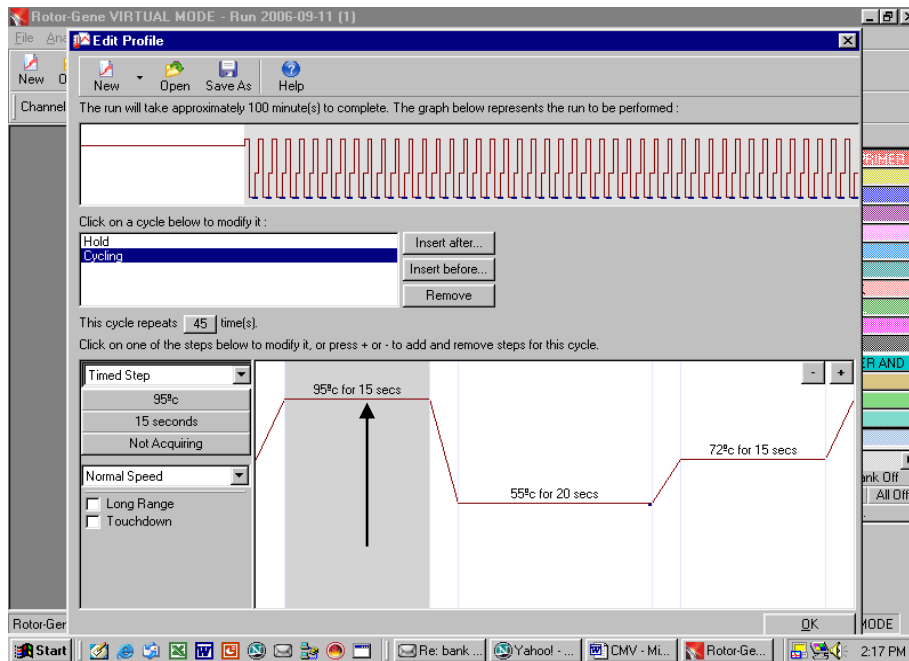


Fig. 10.

Setting up of Annealing step in the cycling profile as depicted below i.e. 55°C for 20 Seconds and defining the Data acquiring channel i.e FAM & JOE

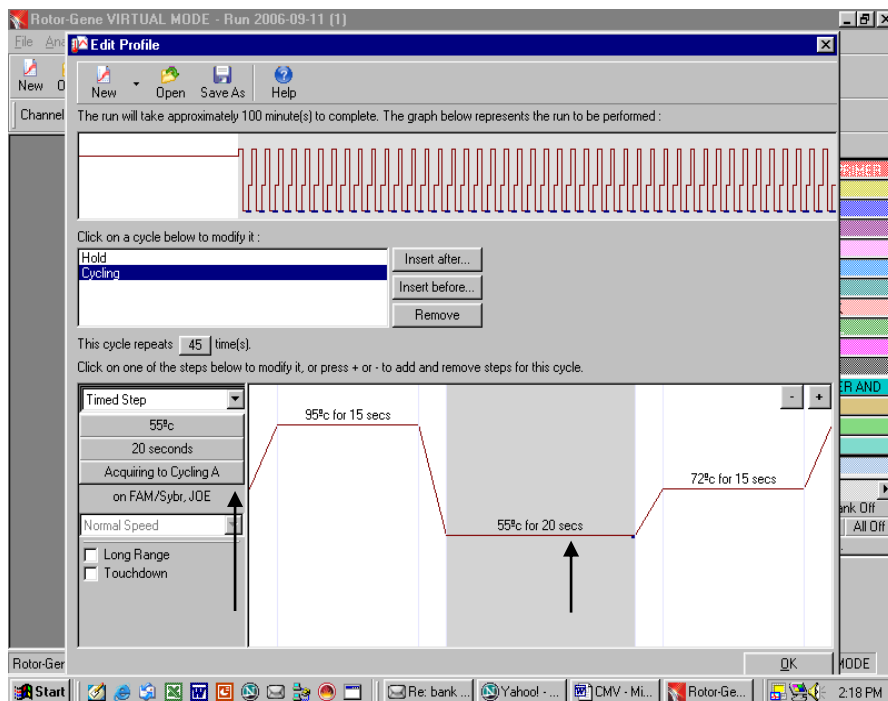


Fig. 11.

Setting up of Extension step in the cycling profile as depicted below i.e. 72°C for 15 Seconds

Geno-Sen's LEPTOSPIRA Real Time PCR Kit

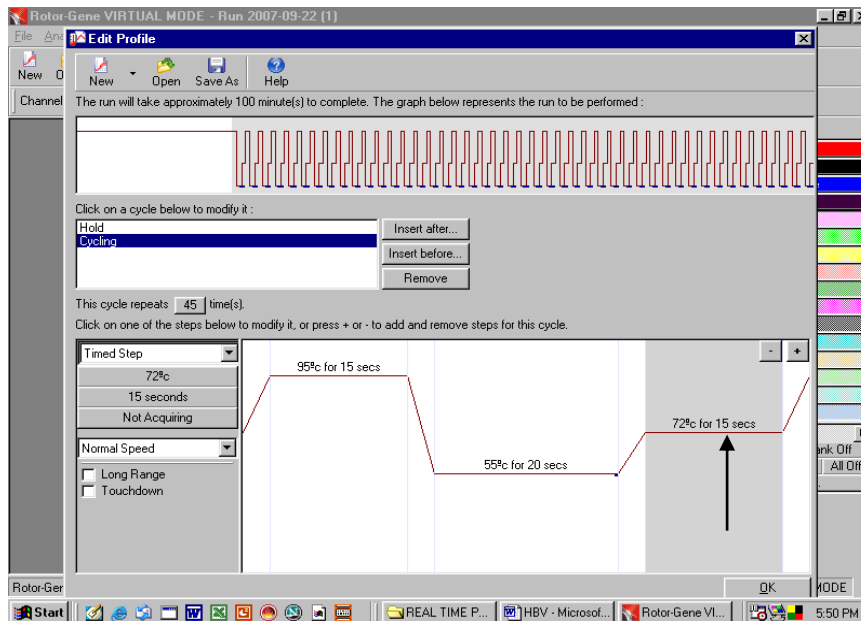


Fig. 12.

Setting up of Number of Cycles to 45 cycles in the cycling profile as depicted below.

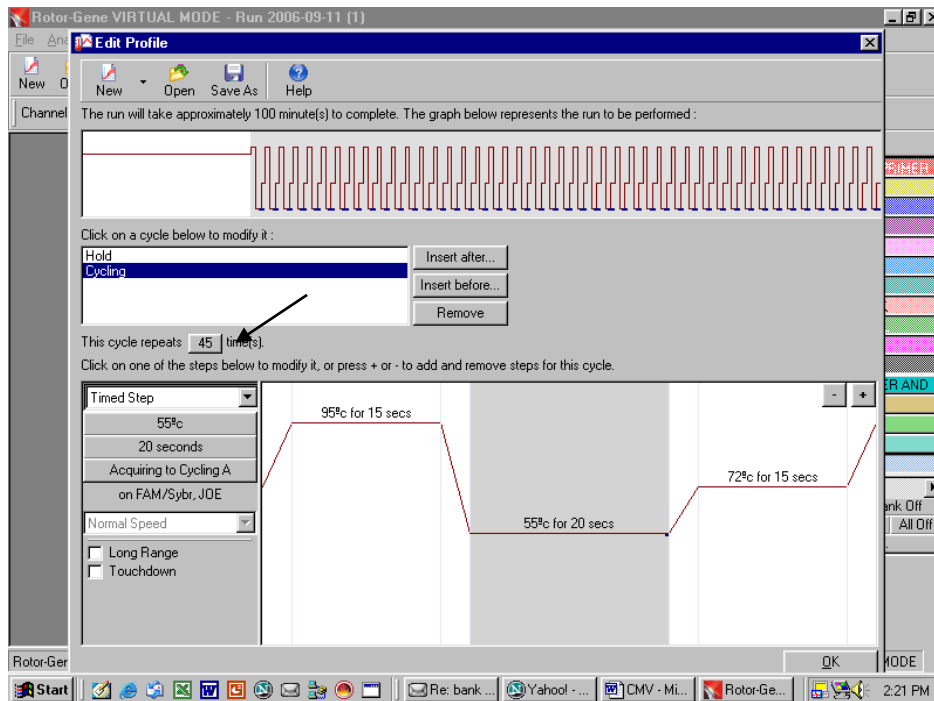


Fig. 13.

Final Confirmation of the Thermal profile by pressing OK button as shown below.

Geno-Sen's LEPTOSPIRA Real Time PCR Kit

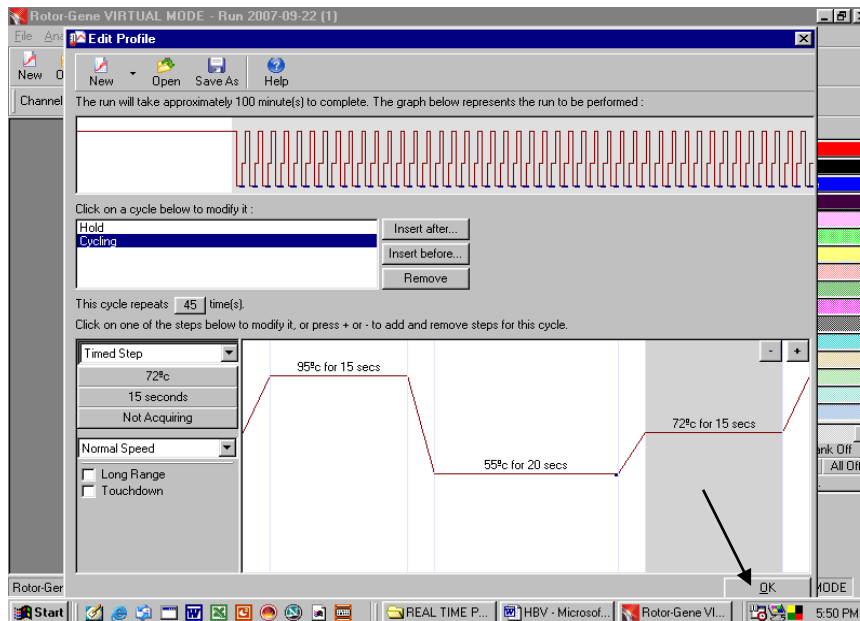


Fig. 14.

Setting the gains for the acquiring channel by clicking at the Calibrate button as shown below.

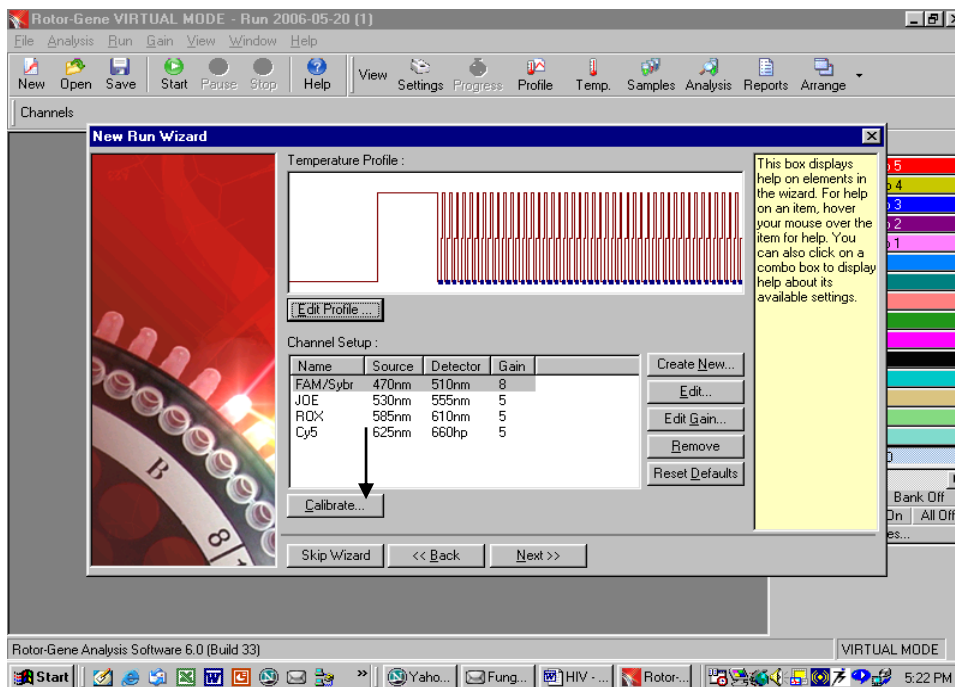


Fig. 15.

The detection range of the fluorescence channels has to be determined according to the fluorescence intensities in the PCR tubes. This adjustment is done in the menu window *Auto Gain Calibration Setup* (activation in menu window *New Experiment Wizard* under *Calibrate*). Please set the calibration temperature to the annealing temperature of the amplification program (compare Fig. 16).

Adjustment of the fluorescence channel sensitivity as shown below.

Geno-Sen's LEPTOSPIRA Real Time PCR Kit

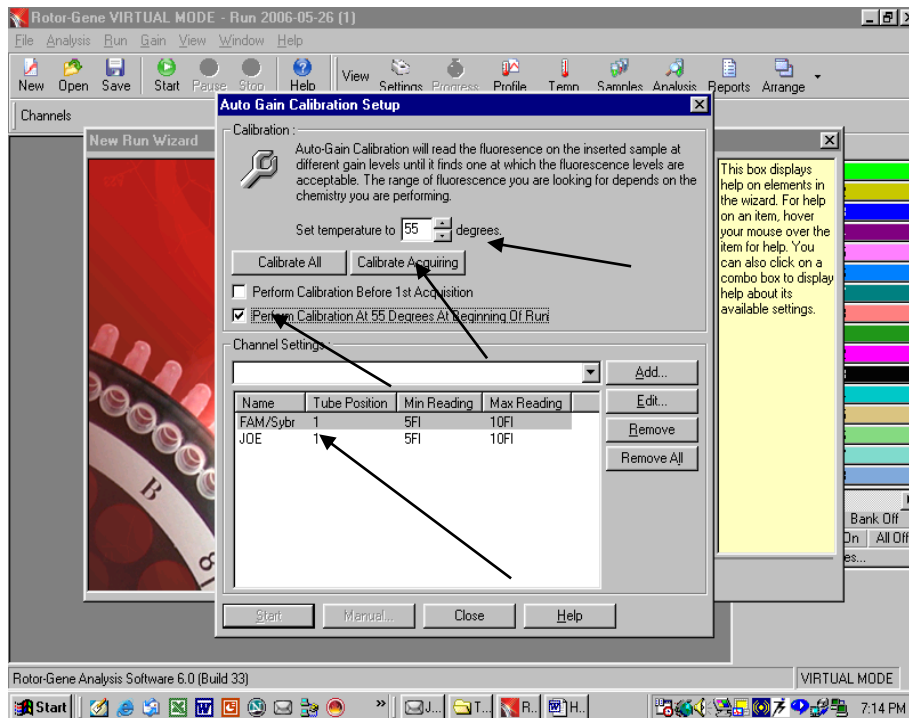


Fig. 16.

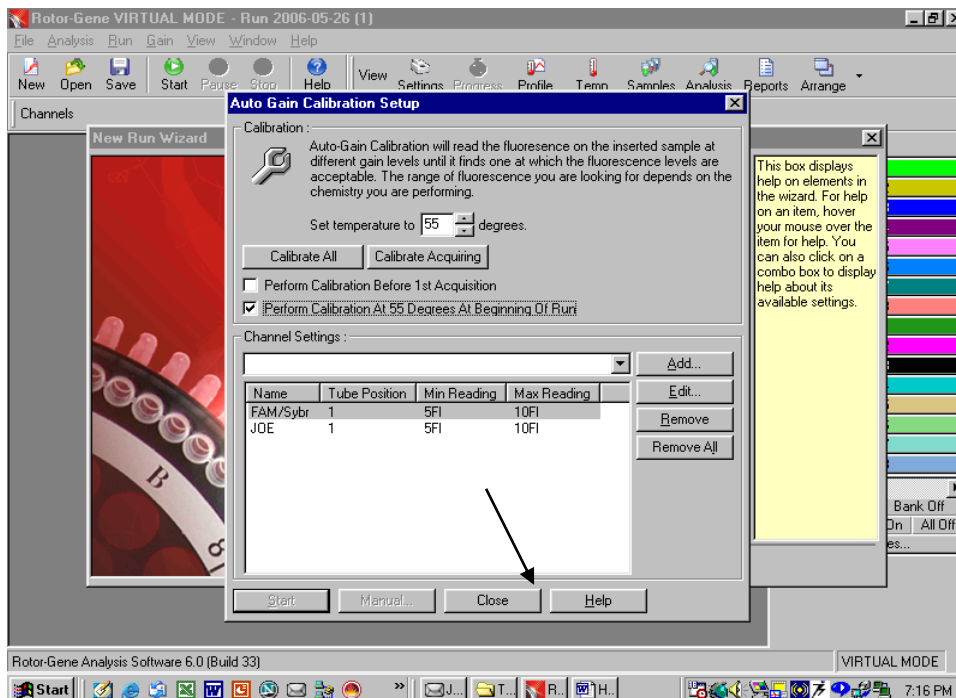


Fig. 17.

Please do not forget to click on the box against “ Perform calibration at 55°C at beginning of the run.” After that press Close and a new window will open as shown below.

The gain values determined by the channel calibration are saved automatically and are listed in the last menu window of the programming procedure.

PRESS NEXT

Geno-Sen's LEPTOSPIRA Real Time PCR Kit

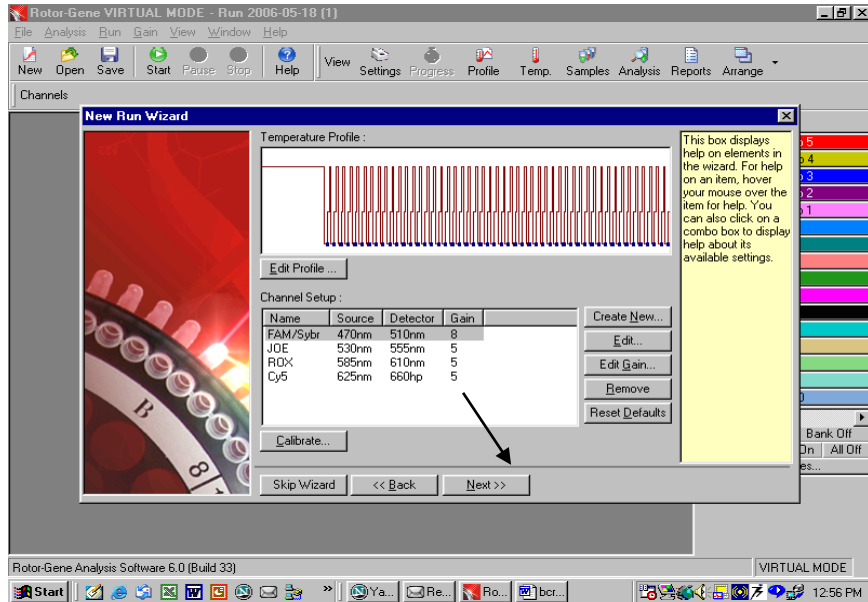


Fig. 18.

Starting of the *Rotor Gene*TM run.

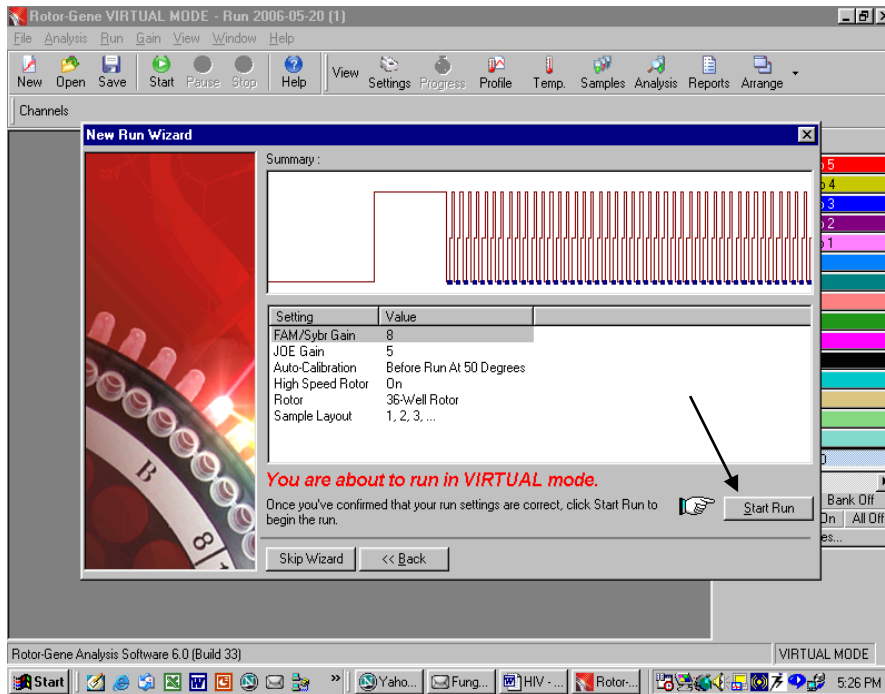


Fig. 19:
Press Start Run Button.

Geno-Sen's LEPTOSPIRA Real Time PCR Kit

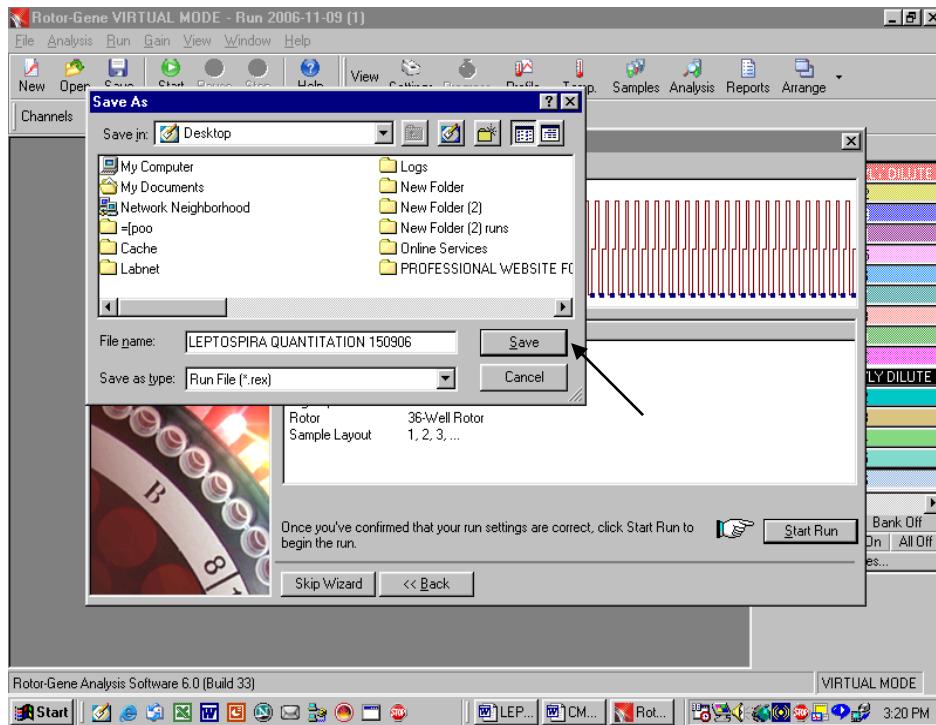


Fig. 20.

SAVING THE RUN FILE AS ABOVE

Store the run file either in my documents or a designated folder as shown above. The moment save button is clicked after the file name, machine will start.

8.f. Programming the *RotorGene*™ 6000

The *RotorGene*™ 6000 PCR program for the detection of *Leptospira* can be divided into following steps:

- G. Setting of general assay parameters & reaction volume
- H. Thermal Profile & Calibration
- I. Cycling profile/ & Initial activation of the Hot Start enzyme
- J. Cycling for Amplification of DNA
- K. Adjustment of the sensitivity of the fluorescence channels
- L. Starting of the *Rotor Gene*™ run

Program the *RotorGene*™ 6000 for these 5 steps according to the parameters shown in Figures 21-36 below All specifications refer to the *RotorGene*™ 6000 software version 1.7 Please find further information on programming the *RotorGene*™ in the *RotorGene*™ 6000 *Operator's Manual*,. In the illustrations these settings are shown by arrows

g) Setting of general assay parameters & Reaction volume.

Please see to it that you in advanced mode and then click Hydrolysis Probes. On a double click the software will automatically go to the next function. If there is just a single click then click new after highlighting the Hydrolysis Probes.

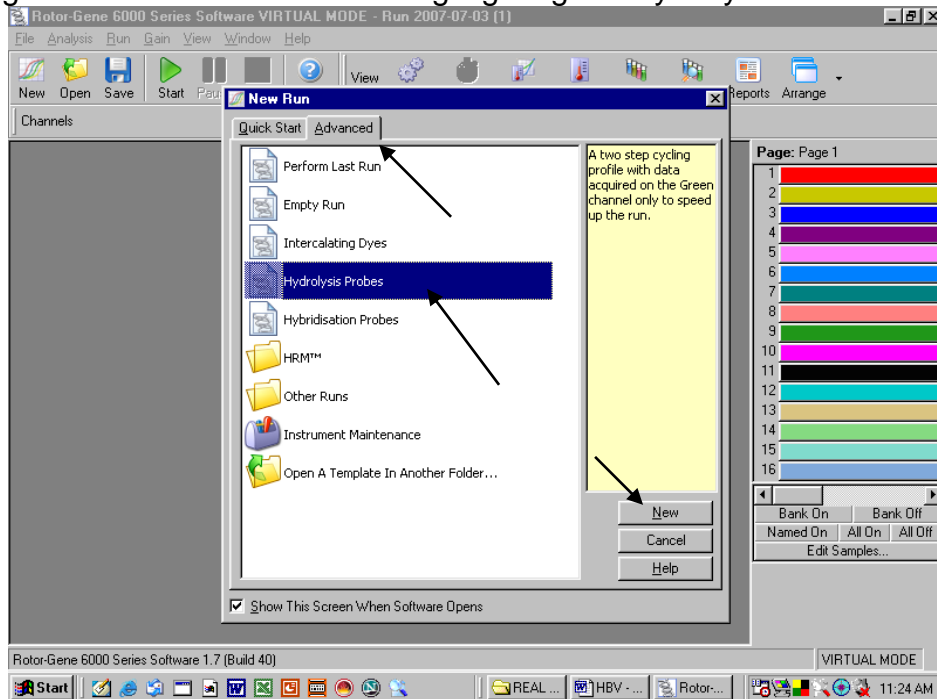


Fig. 21.

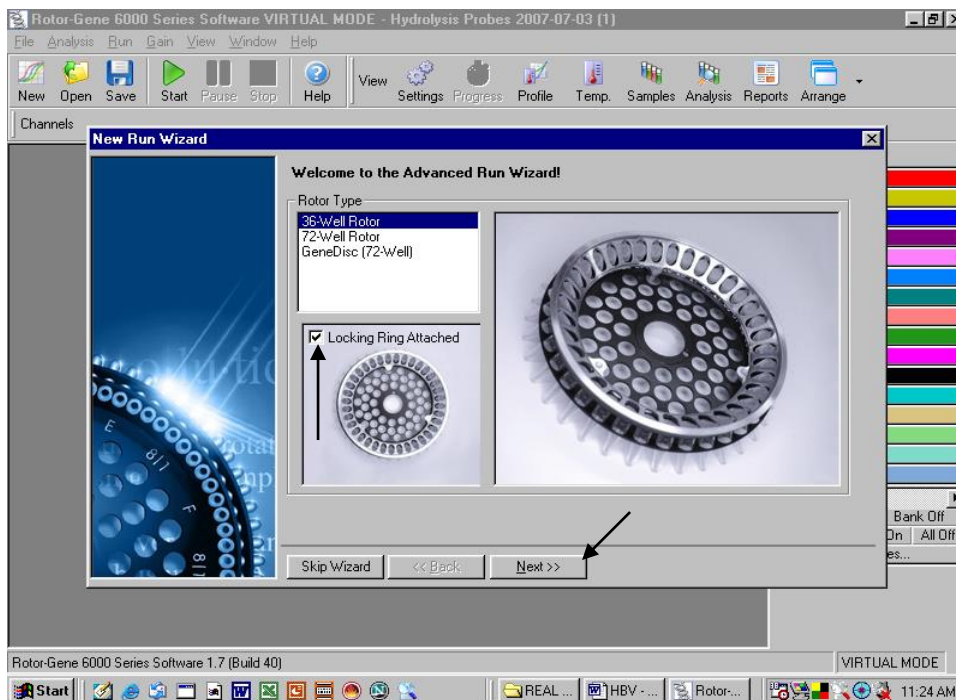


Fig. 22.

First, confirm by clicking in the box as shown in the figure above whether a locking ring has been attached. Then click next to proceed to the next step.

Confirmation of reaction Volume as follows.

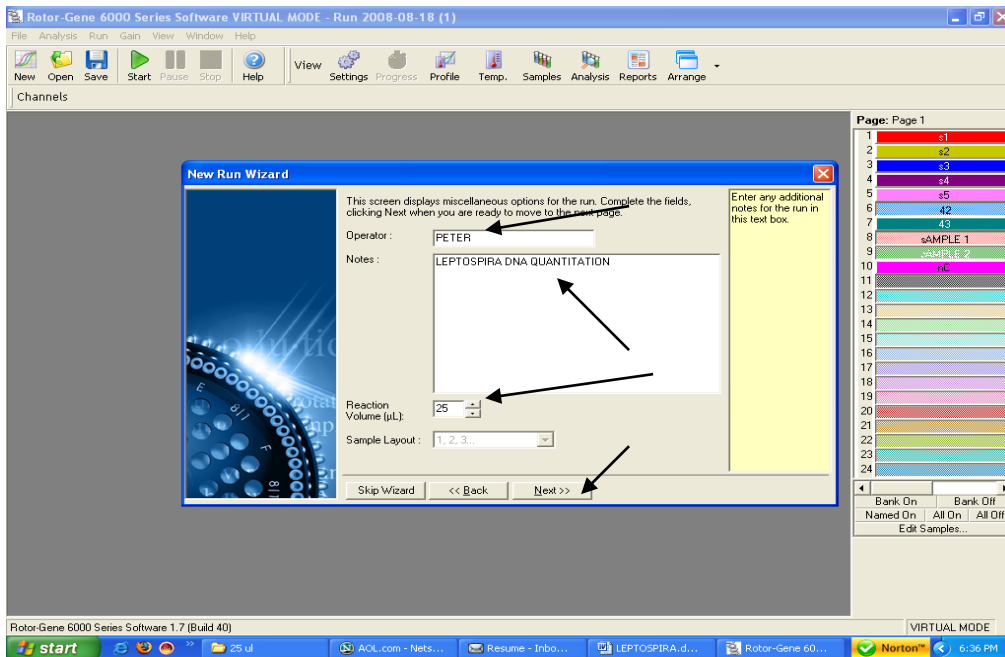


Fig. 23.

- Please click on the volume buttons to make sure that 25µl is reflected in the window as shown above.
- In case required Operators Name can be Fed into the system.
- Any Notes which need to be either printed into the Report can be typed out in the Box of Notes.
- Then click next and a new window will open as shown below.

h) THERMAL PROFILE & CALIBRATION:

Here the thermal profile for the assay will be defined.

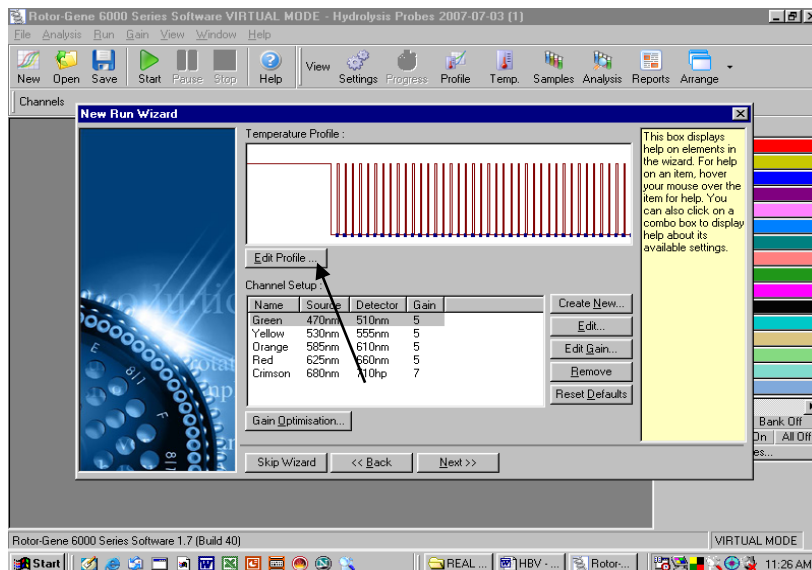


Fig. 24.

Programming the temperature profile is done by activating the button *Edit Profile* in the next *New RUN Wizard* menu window as shown above.

[Geno-Sen's LEPTOSPIRA Real Time PCR Kit](#)

i) CYCLING PROFILE: First hold 95°C for 10 minutes as below

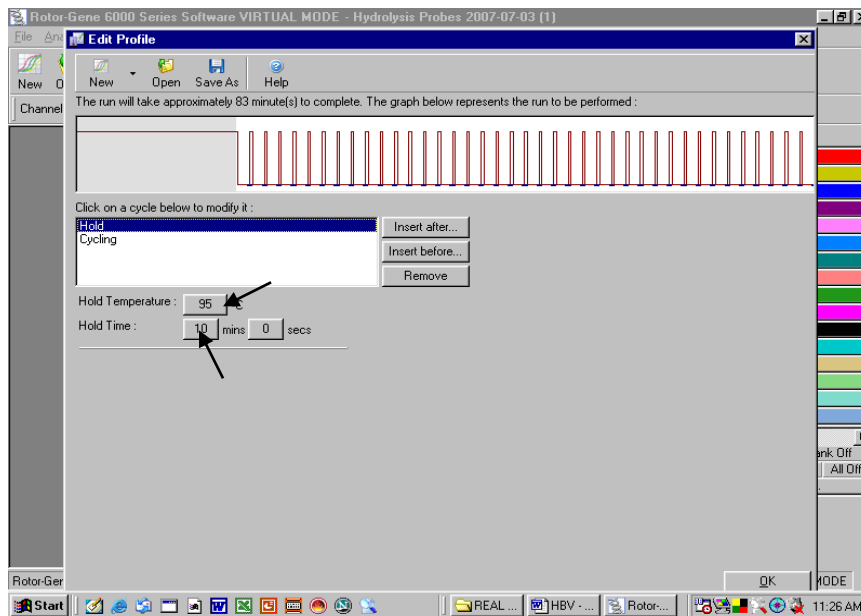


Fig. 25. Initial activation of the Hot Start enzyme. Generally the window will open with the Hold Temp as 95°C and the Hold Time as 10 minutes. In case it is different then set the same to as shown above.

j) Setting the Cycling and acquisition.

When clicked on Cycling the window will open as below.

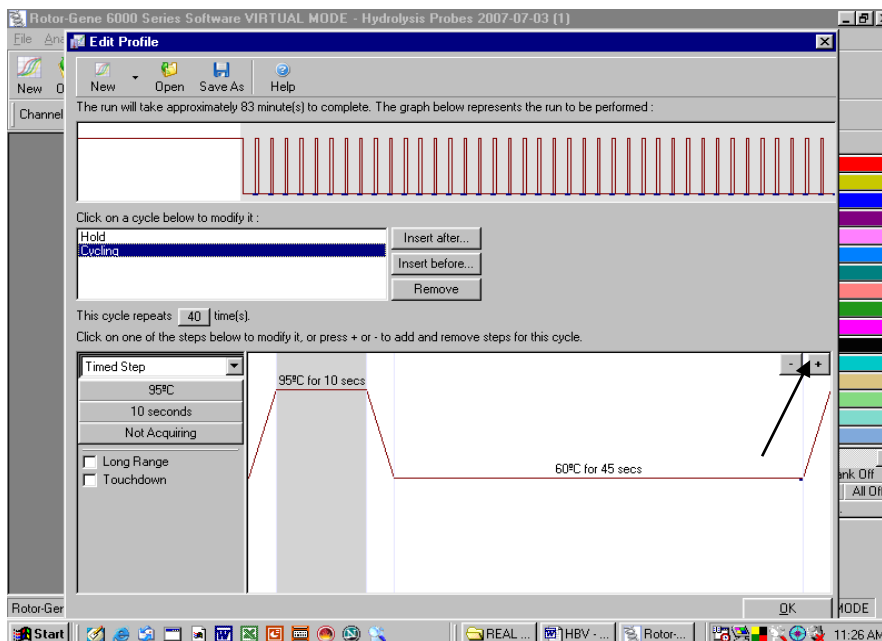


Fig. 26.

Click on the Plus sign at the right hand as shown in the figure to make the Cycling a three step process. A new window as shown below will be there.

[Geno-Sen's LEPTOSPIRA Real Time PCR Kit](#)

Setting up of denaturation step in the cycling profile as depicted below i.e. 95°C for 15 seconds.

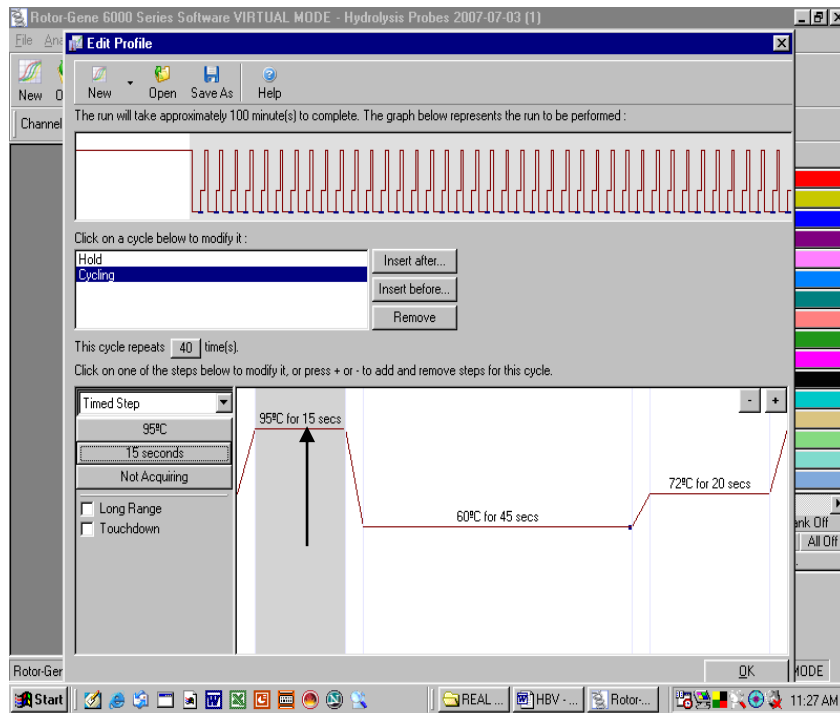


Fig. 27.

Setting up of Anneling step in the cycling profile as depicted below i.e. 55°C for 20 Seconds

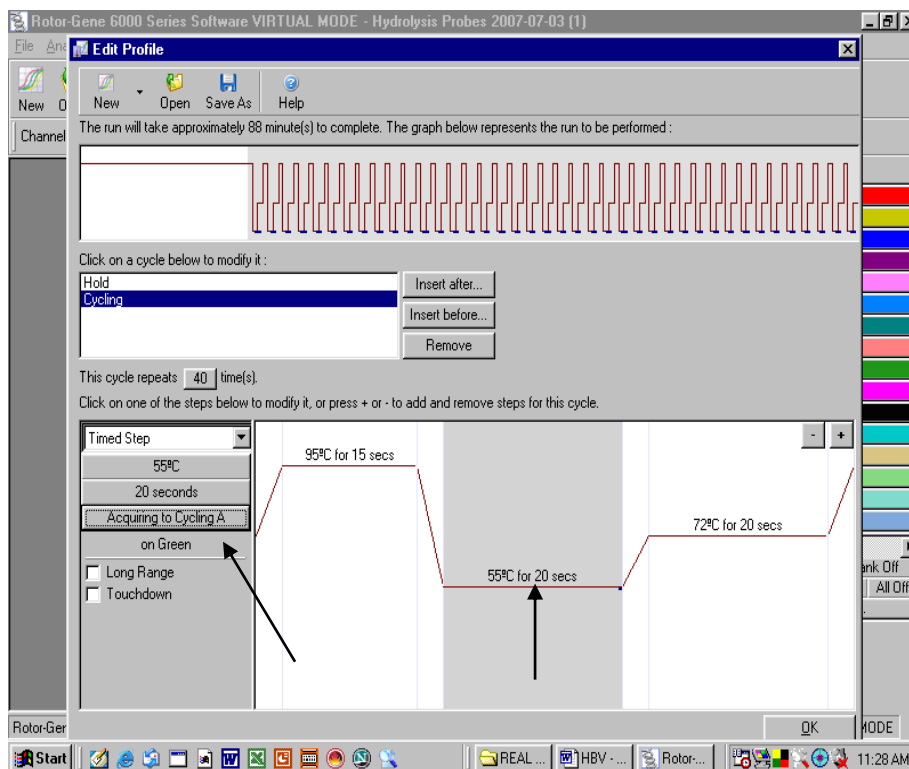


Fig. 28.

After setting the Anneling temperature and the time for anneling click on the "Acquiring to Cycling A" as shown by arrow. A New window will open as shown below.

Geno-Sen's LEPTOSPIRA Real Time PCR Kit

Defining the Data acquiring channel i.e Green (FAM) & Yellow (JOE)

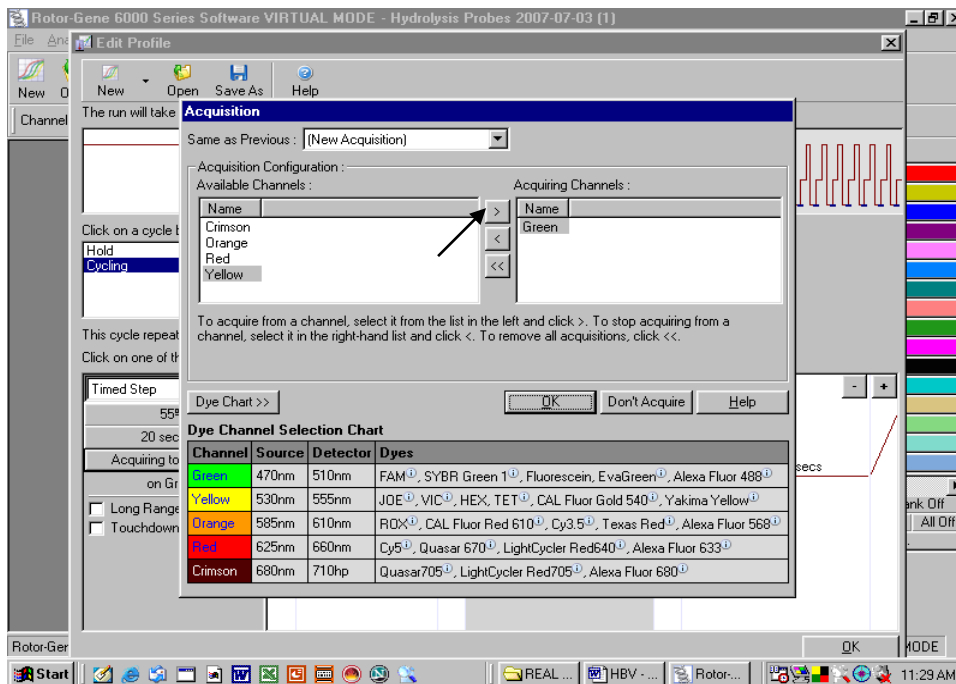


Fig. 29.

Highlight the Yellow and then press the right arrow. Just see before shifting the yellow to right that there is no other channel in the right except for Green. In case any other Channel appears besides Green on the right then the same be shifted to the left.

Confirmation of Channels as shown below.

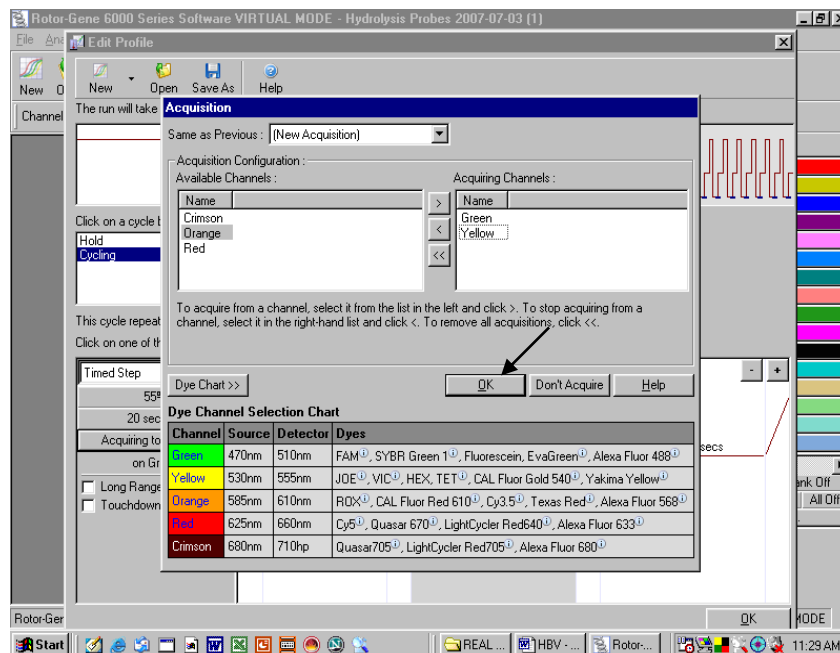


Fig. 30.

Once the Yellow and Green Channels are on the Right side then press OK as shown by the arrow.

Geno-Sen's LEPTOSPIRA Real Time PCR Kit

Setting up of Extension step in the cycling profile as depicted below i.e. 72°C for 15 Seconds

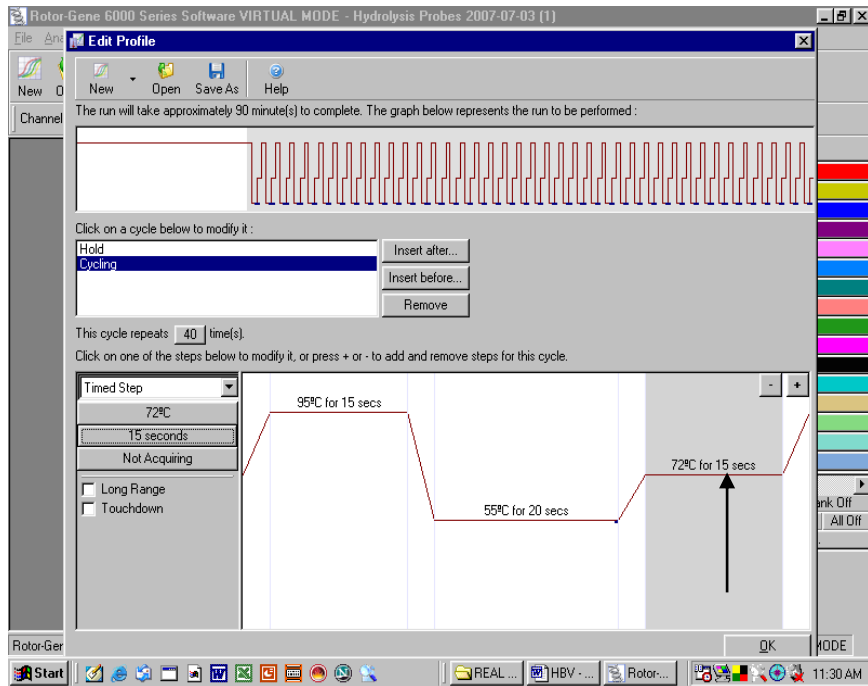


Fig. 31.

Setting up of Number of Cycles to 45 cycles in the cycling profile as depicted below.

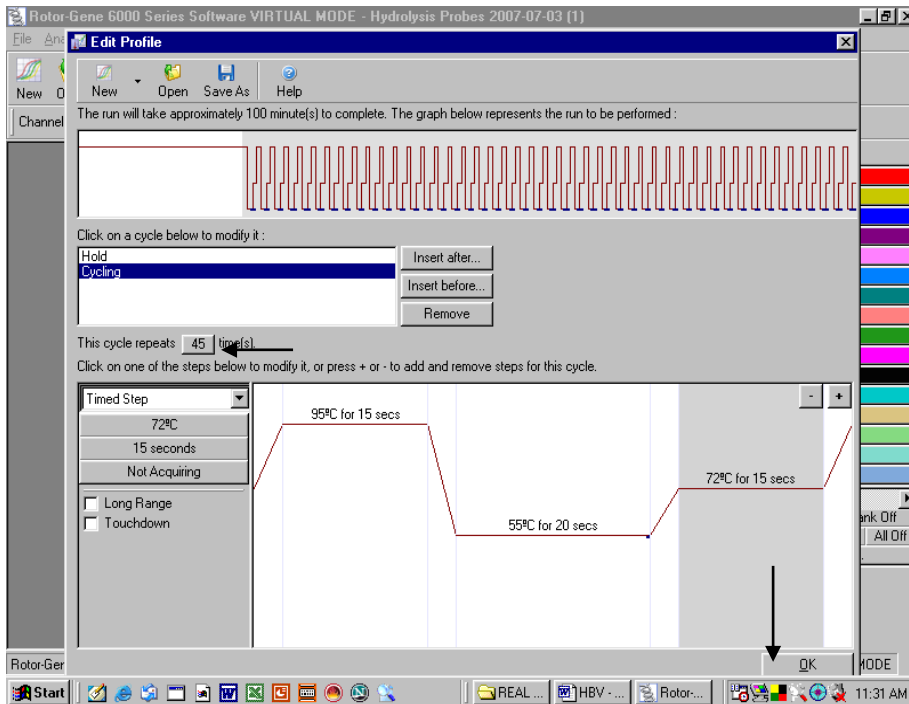


Fig. 32.

After setting the number of Cycles Press OK.

k) Setting the gains for the acquiring channel by clicking at the Gain Optimisation button as shown below.

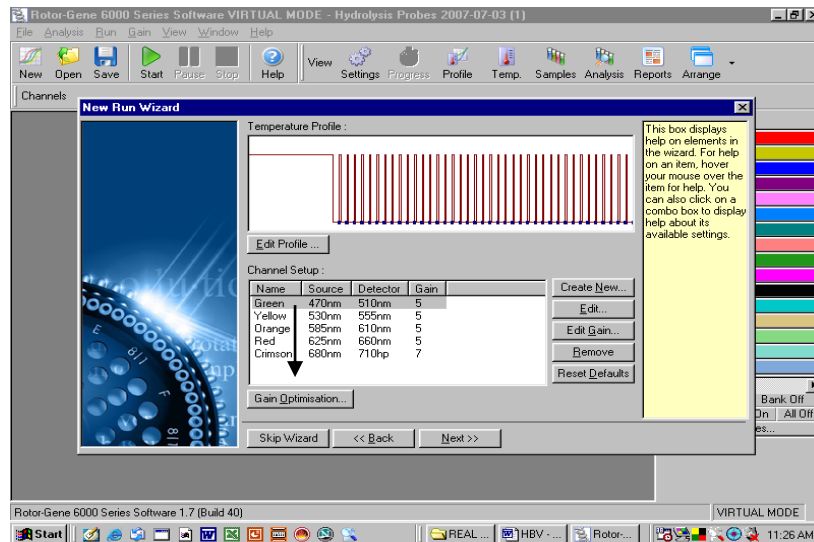


Fig. 33

The detection range of the fluorescence channels has to be determined according to the fluorescence intensities in the PCR tubes. This adjustment is done in the menu window *Auto Gain optimization Setup* (activation in menu window *New Experiment Wizard* under Gain Optimization). Please set the temperature to the annealing temperature of the amplification program (compare Fig.34).

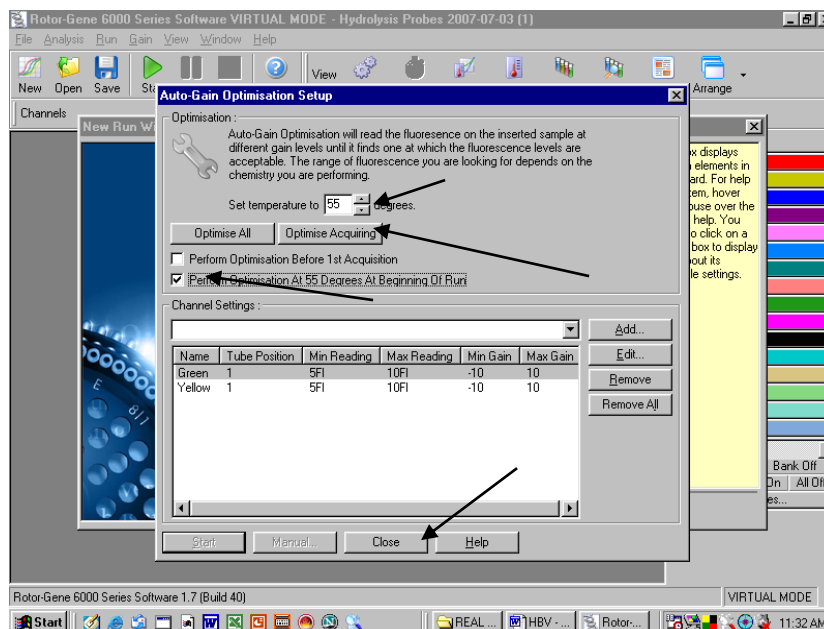


Fig. 34.

The following needs to be done.

- Click on the Optimise Acquiring
- Click on Set temperature To Adjust the Temperature to 55°C.
- Click on the Box Perform Optimisation At 55 degree At beginning of Run.
- Just see that below the channel settings there appear only two channels i.e. Green and Yellow. In case it is different then the channels have not been set properly. Close the window and reset the channels.
- Then Press Close.

L) PRESS Start RUN

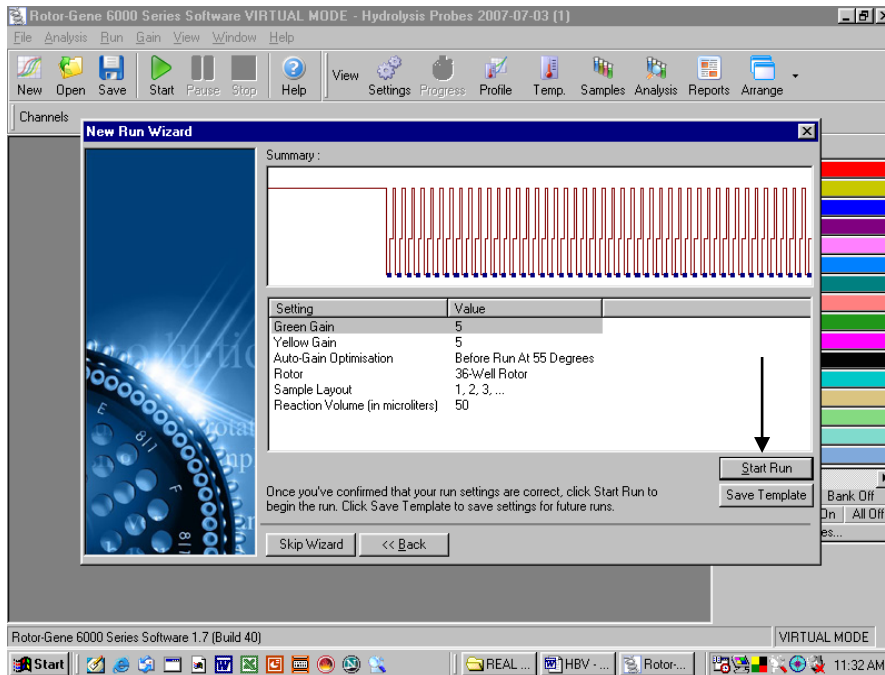


Fig. 35.

Saving the RUN File.

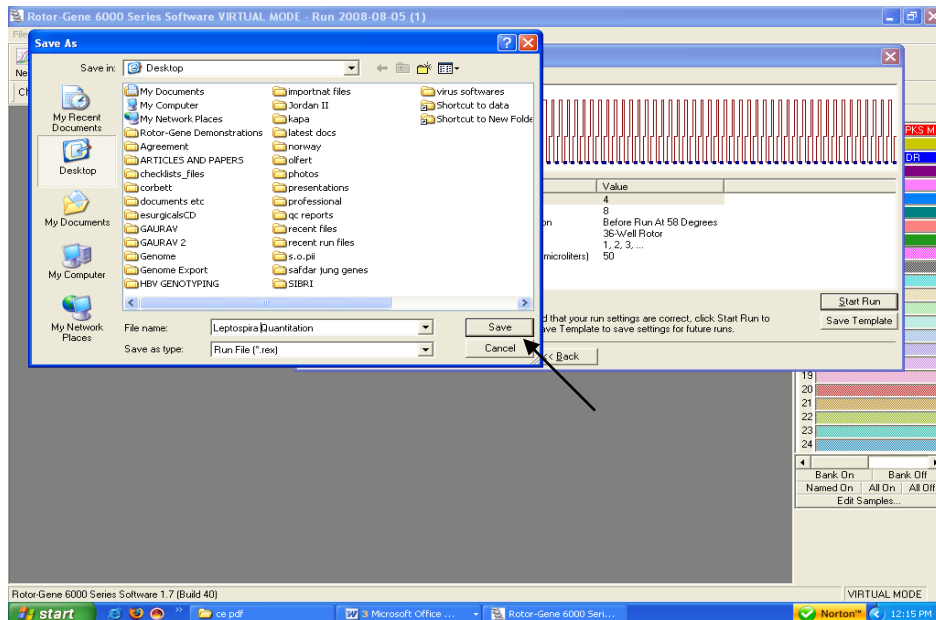


Fig. 36.

Store the run file either in my documents or a designated folder as shown above. The moment save button is clicked after the file name settings, machine will start.

9. a) Generated Data Interpretation & Analysis for RotorGene 2000/3000

Data analysis is performed with the *RotorGene*[™] software according to the manufacturer's instructions (*RotorGene*[™] 3000 Operator's Manual).

The following results are possible:

1. A signal is detected in fluorescence channel Cycling A.FAM.

The result of the analysis is positive: The sample contains LEPTOSPIRA DNA.

2. In fluorescence channel Cycling A.FAM no signal is detected.

No LEPTOSPIRA DNA detectable. It can be considered negative if there is amplification in the Joe Channel. Please refer for details on PCR inhibition in the section PCR inhibition.

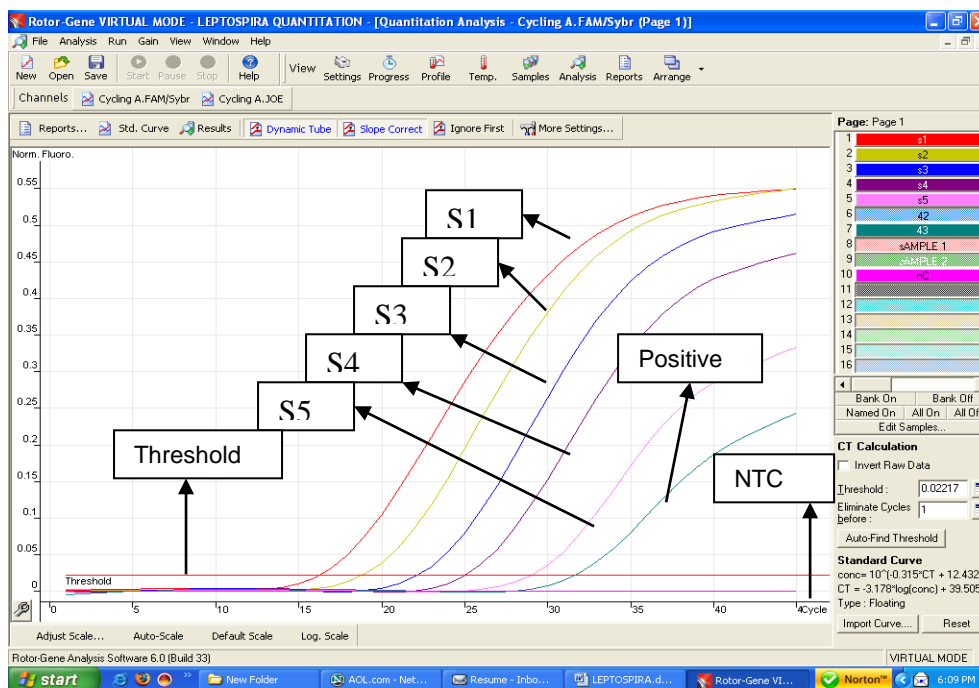


Fig. 37: Detection of the quantitation standards (*LEPTOSPIRA* S 1-5) in fluorescence channel Cycling A.FAM. NTC: non-template control.

Examples of positive and negative PCR reactions are given in the above figure.

Geno-Sen's LEPTOSPIRA Real Time PCR Kit

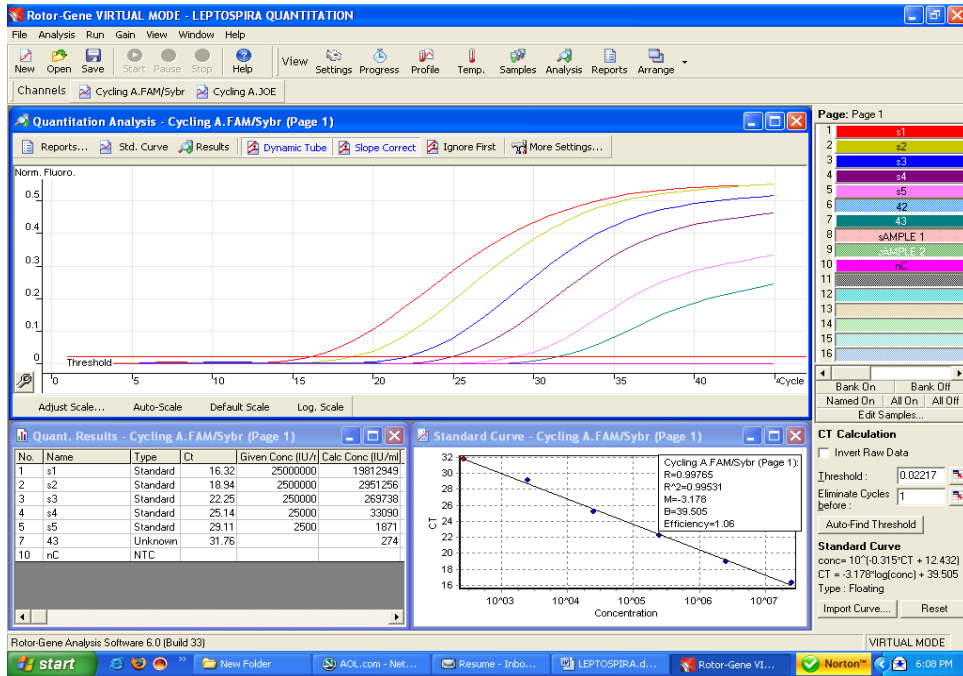


Fig. 38.

Example of analysed data for LEPTOSPIRA where all the amplification curves can be seen as well as the standard curve, reaction efficiency, M value etc. can be seen and the quantitative data for the samples can be seen.

Inhibition Control gene amplification.

Analyze the Joe Channel

PCR Inhibition

A signal is detected in fluorescence channel Cycling A. Joe: **No PCR inhibition**

In fluorescence channel Cycling A. Joe no signal is detected.

But signal detected in FAM: The sample is positive for LEPTOSPIRA DNA.

In fluorescence channel Cycling A. Joe no signal is detected.

No signal detected in FAM as well: A possible PCR inhibition has occurred.

9 b) Generated Data Interpretation & Analysis for RotorGene 6000

Data analysis is performed with the *RotorGene™* software according to the manufacturer's instructions (*RotorGene™ 6000 Operator's Manual*).

The following results are possible:

3. A signal is detected in fluorescence channel Cycling A.Green.

The result of the analysis is positive: The sample contains LEPTOSPIRA DNA.

4. In fluorescence channel Cycling A.Green no signal is detected.

No LEPTOSPIRA DNA detectable. It can be considered negative if there is amplification in the Yellow Channel. Please refer for details on PCR inhibition in the section PCR inhibition.

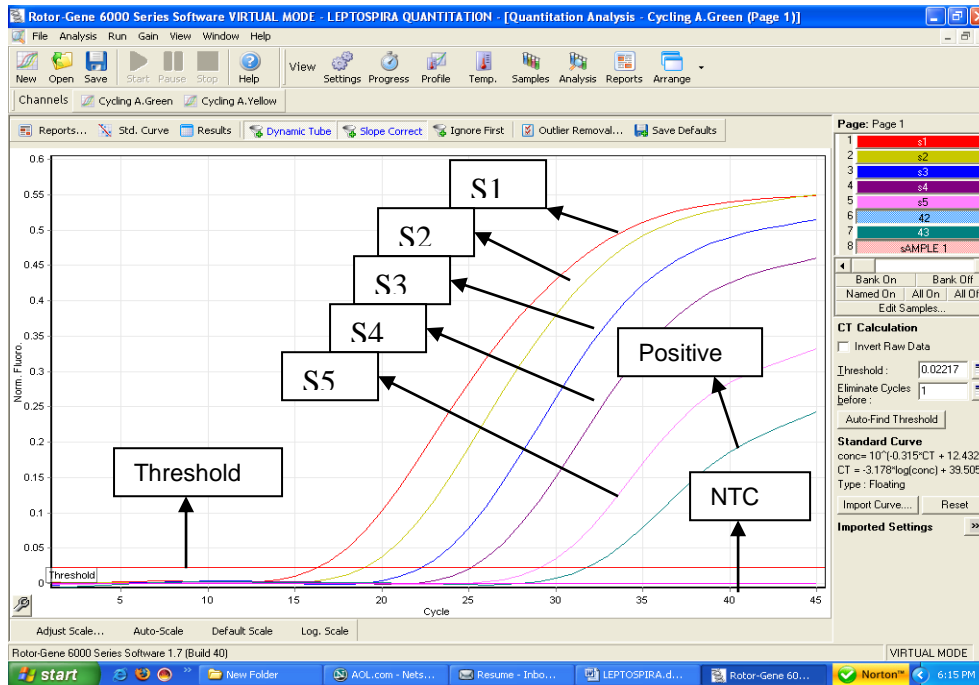


Fig. 39: Detection of the quantitation standards (*LEPTOSPIRA* S 1-5) in fluorescence channel Cycling A.Green. NTC: non-template control.

Examples of positive and negative PCR reactions are given in the above figure.

Geno-Sen's LEPTOSPIRA Real Time PCR Kit

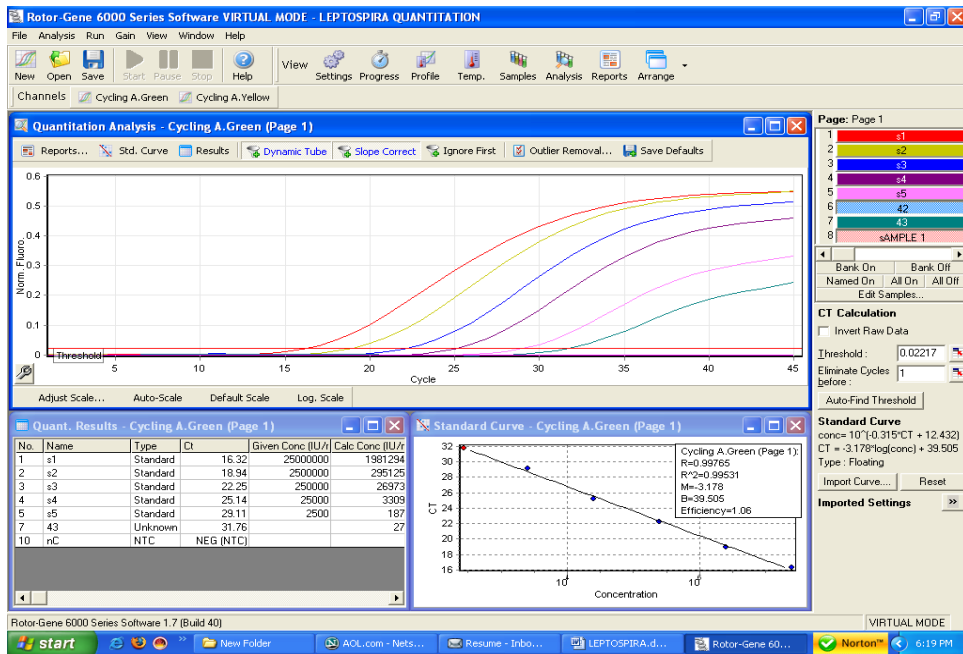


Fig. 40.

Example of analysed data for LEPTOSPIRA where all the amplification curves can be seen as well as the standard curve, reaction efficiency, M value etc. can be seen and the quantitative data for the samples can be seen.

Inhibition Control gene amplification.

Analyze the Yellow Channel

PCR Inhibition

A signal is detected in fluorescence channel Cycling A. Yellow: **No PCR inhibition**

In fluorescence channel Cycling A. Yellow no signal is detected.

But signal detected in Green: The sample is positive for LEPTOSPIRA DNA.

In fluorescence channel Cycling A. Yellow no signal is detected.

No signal detected in Green as well: A possible PCR inhibition has occurred.

10. a) Troubleshooting for Rotor Gene 2000/3000

1. No signal with positive Standards (LEPTOSPIRA S 1-5) in fluorescence channel Cycling A.FAM.

- Incorrect programming of the *Rotor-Genes™ 2000/3000*.

➔ Repeat the PCR with corrected settings.

2. Weak or no signal in fluorescence channel Cycling A. FAM:

- The PCR conditions do not comply with the protocol.

➔ Repeat the PCR with corrected settings.

- The LEPTOSPIRA Super Mix *R1* has been thawed and frozen too often.
- The LEPTOSPIRA Super Mix *R1* has been kept at +4°C for longer than 5 hours.

➔ Please mind the storage conditions given in the **Storage**.

➔ Repeat the assay using a new LEPTOSPIRA super mix (*R1*).

- **The PCR was inhibited.**

➔ Make sure that you use a recommended extraction method (see **8.a. DNA extraction**) and stick closely to the manufacturer's instructions.

10. b) Troubleshooting for Rotor Gene 6000

1. No signal with positive Standards (LEPTOSPIRA S 1-5) in fluorescence channel Cycling A.Green.

- Incorrect programming of the *Rotor-Gene*[™] 6000.

➔ Repeat the PCR with corrected settings.

2. Weak or no signal in fluorescence channel Cycling A. Green:

- The PCR conditions do not comply with the protocol.

➔ Repeat the PCR with corrected settings.

- The LEPTOSPIRA Super Mix *R1* has been thawed and frozen too often.
- The LEPTOSPIRA Super Mix *R1* has been kept at +4°C for longer than 5 hours.

Geno-Sen's LEPTOSPIRA Real Time PCR Kit

- ➔ Please mind the storage conditions given in the **Storage**.
- ➔ Repeat the assay using a new LEPTOSPIRA super mix (R1).

- **The PCR was inhibited.**
 - ➔ Make sure that you use a recommended extraction method (see **8.a. DNA extraction**) and stick closely to the manufacturer's instructions.

11. Specifications

11.a Sensitivity and Reproducibility

In order to determine the sensitivity of the **Geno-Sen's LEPTOSPIRA Real Time PCR Kit**, a dilution series has been set up from 10^7 down to 10^0 Copies/ μ l of LEPTOSPIRA DNA and analyzed with the **Geno-Sen's LEPTOSPIRA Real Time PCR Kit**. The assays were carried out on three different days in the form of 8-fold determinations. The results were determined by a probit analysis. The detection limit as determined for **Geno-Sen's LEPTOSPIRA Real Time PCR Kit** is consistently 80 Copies/ml. This means that there is 95% probability that 80 Copies/ml will be detected.

Analytical Sensitivity:

Analytical Sensitivity in Conjunction with the Geno Sen's® **Genomic DNA Extraction Mini Kit — for DNA purification (Cat . No. 98021)** of the **Geno Sen's®-LEPTOSPIRA Real Time PCR RG Kit on RotorGene 3000/6000** was determined by Spiking a known negative Serum to a nominal 90 copies/ml. This was subjected to extraction using the **Geno Sen's® Genomic DNA Extraction Mini Kit — for DNA purification (Cat . No. 98021)** eight times with starting volume of 200 μ l & elution volume of 60 μ l.

All the Eight extractions were then analyzed with the Geno Sen's® LEPTOSPIRA Real Time PCR RG Kit along with the standards & the NTC.

All the eight extractions were amplified correctly & the mean value obtained for the eight replicates was 89 copies/ml.

Hence Analytical Sensitivity in Conjunction with the Geno Sen's® **Genomic DNA Extraction Mini Kit — for DNA purification (Cat . No. 98021)** of the **Geno Sen's®-LEPTOSPIRA Real Time PCR RG Kit on Rotor Gene 3000/6000** was determined to be 90 copies/ml.

11.b Specificity

In order to check the specificity of the **Geno-Sen's LEPTOSPIRA Real Time PCR kit**, different DNA & DNA listed below were analyzed with **Geno-Sen's LEPTOSPIRA Real Time PCR Kit**. None of these led to a positive signal with the

[Geno-Sen's LEPTOSPIRA Real Time PCR Kit](#)

Geno-Sen's LEPTOSPIRA Real Time PCR kit. Gene sequence analysis of the amplified region of LEPTOSPIRA shows a pronounced homology among the various LEPTOSPIRA subtypes, and no homology with other DNA. Besides which utmost care has been taken in selection of the primers & probes being used in the kit.

To further Validate the stringent data In order to check the specificity of the **Geno Sen's® LEPTOSPIRA Real Time PCR RG Kit**, different RNA & DNA listed below were analyzed with **Geno Sen's® LEPTOSPIRA Real Time PCR RG Kit**. None of these led to a positive signal with the **Geno Sen's LEPTOSPIRA Real Time PCR RG Kit**.

Varicella Zoster Virus	TTV	N. Meningitis
Human Herpes Virus 6	Hepatitis C Virus	S. Pneumonia
Epstein barr Virus	Hepatitis E Virus	ENTEROVIRUS
Cytomagalovirus	HIV-1	Mycobacterium tuberculosis
Chlamydia pneumonia	HIV-2	Hepatitis A
Parvovirus B 19	WEST NILE VIRUS	Staphylococcus aureus
Dengue Virus 1-4	H. Influenza	Salmonella enteritidis
Leprosy	Malaria	ChikunGunya Virus
B.pseudomallie	JEV	H. Pylori.

In order to validate the Specificity further with wet lab testing the following Known clinical samples were analyzed using the **Geno Sen's® LEPTOSPIRA Real Time PCR RG kit** on RotorGene 3000/6000. The extraction was carried out with the **Geno Sen's® Genomic DNA Extraction Mini Kit — for DNA purification (Cat. No. 98021)**

The run was carried out with the known set of standards in order to quantiate the **LEPTOSPIRA DNA Gene**.

Sample Type	Serum	Whole blood
High +ve's	1	
Medium +ve's	6	5
Low +ve's	4	6
Extremely low +ve's	4	2
Negative samples.	5	7
	20	20

All the above samples were correctly identified by the **Geno Sen's® LEPTOSPIRA Real Time PCR RG kit** & all the 7 extremely low samples were accurately detected by the **Geno Sen's® LEPTOSPIRA Real Time PCR RG kit** & exhibited copies around 90 copies /ml or less than 90 copies/ml.

Further studies are underway on this aspect.

12. Warranty::

Products are guaranteed to confirm to the quality and content indicated on each vial and external labels during their shelf life. Genome Diagnostics Pvt. Ltd. obligation and purchaser's rights under the warranty are limited to the replacement by Genome Diagnostics Pvt. Ltd of any product that is shown defective in fabrication, and that must be returned to Genome Diagnostics Pvt. Ltd Freight prepaid, or at Genome

Geno-Sen's LEPTOSPIRA Real Time PCR Kit

Diagnostics Pvt. Ltd. option, replacement of the purchasing price. Any complaint on damaged goods during transport must be directed to the handling or transport agent. *In Vitro* Diagnostic Medical device, as per the Directive 98/79/EC specifications. This product must be used by qualified professionals only. It is the responsibility of the user to ascertain that a given product is adequate for a given application. Any product not fulfilling the specifications included in the product sheet will be replaced. This warranty limits our responsibility to the replacement of the product. No other warranties, of any kind, express or implied, including without limitation, implicit warranties of commercialization ability or adequacy for a given purpose, are provided by Genome Diagnostics Pvt. Ltd. Genome Diagnostics Pvt. Ltd will not be responsible for any direct, indirect, consequential or incidental damage resulting of the use, misuses, results of the use or inability to use any product.

13. Limitations of product use:

- a.) All reagents may exclusively be used for *in vitro* diagnostics.
- b.) The product is to be used by personnel specially instructed and trained in for the *in-vitro* diagnostics procedures only.
- c.) It is important to pipet the indicated quantities, and mix well after each reagent addition. Check pipettes regularly.
- d.) Instructions must be followed Correctly in order to obtain correct results. If the user has any questions, please contact our Technical Dept. (dharam@vsnl.com or at pbpl@vsnl.net).
- e.) This test has been validated for use with the reagents provided in the kit. The use of other Reagents or methods, or the use of equipment not fulfilling the specifications, may render equivocal results. User is responsible for any modifications done in any of the indicated parameters. Compliance with the kit protocol is required.
- f.) Detection of DNA depends on the number of DNA present in the sample, and can be affected by sample collection methods, patient-related factors (e.g. age, symptoms), or for infection stage and sample size.
- g.) False negative results may be obtained due to polymerase inhibition. It is recommended to perform control reactions to distinguish between inhibition and true negatives. This is achieved by the inhibition Control included in the kit.
- h.) Cross contamination between samples and exogenous DNA can only be avoided by following good laboratory practice. Instructions in this document must be strictly followed.
- i.) Attention should be paid to expiration dates printed on the kit box and labels of all components. Do not use expired components.

If you have any further questions or problems, please contact our technical support at dharam@vsnl.com OR pbpl@vsnl.net.

14. LIST OF GENO-SEN'S RANGE OF REAL TIME PCR KITS

S.NO.	PRODUCT
1	HIV-1 RG quantitative Real time PCR kit.
2	HBV RG quantitative Real time PCR kit.
3	HCV RG quantitative Real time PCR kit.
4	HCV Genotyping 1/2/3/4 RG qualitative Real time PCR kit.
5	HEV RG quantitative Real time PCR kit.
6	HAV RG quantitative Real time PCR kit.
7	JEV RG quantitative Real time PCR kit.
8	ENTEROVIRUS RG quantitative Real time PCR kit.
9	DENGUE RG quantitative Real time PCR KIT
10	HSV 1 & 2 RG quantitative Real time PCR kit.
11	CMV RG quantitative Real time PCR kit.
12	Hanta Virus RG quantitative Real time PCR kit.
13	Measles Virus RG quantitative Real time PCR kit.
14	West Nile Virus RG quantitative Real time PCR kit.
15	H5 N1 (Bird Flu) RG quantitative Real time PCR kit.
16	Chikungunya RG quantitative Real time PCR kit.
17	TTV RG quantitative Real time PCR kit.
18	SARS RG quantitative Real time PCR kit.
19	JC/BK Virus RG quantitative Real time PCR kit.
20	MTb Complex RG quantitative Real time PCR kit.

[Geno-Sen's LEPTOSPIRA Real Time PCR Kit](#)

21	MTb Complex /MOTT RG quantitative Real time PCR kit.
22	Chlamydia pneumonia RG quantitative Real time PCR kit.
23	Streptococous pneumonia RG quantitative Real time PCR kit.
24	N. Meningitis RG quantitative Real time PCR kit.
25	H. Influenza RG quantitative Real time PCR kit.
26	Leprosy RG quantitative Real time PCR kit.
27	Helicobacter Pylori RG quantitative Real time PCR kit.
28	Scrub Typhus RG quantitative Real time PCR kit.
29	B. Pseudomalie RG quantitative Real time PCR kit.
30	Filaria RG quantitative Real time PCR kit.
31	Leptospira(pathogenic) RG quantitative Real time PCR kit.
32	CCL3-L1 RG quantitative Real time PCR kit.
33	Malaria (P. Vivax) RG quantitative Real time PCR kit.
34	Bcr/abl Major RG quantitative Real time PCR kit.
35	Bcr/abl Minor RG quantitative Real time PCR kit.
36	PML/RARA RG quantitative Real time PCR kit.
37	RARA/PML RG quantitative Real time PCR kit.
38	GAPDH RG quantitative Real time PCR kit.
39	β -Actin RG quantitative Real time PCR kit.
40	β -Globin RG quantitative Real time PCR kit.
41	Abl gene RG quantitative Real time PCR kit.
42	Rabies RG quantitative Real time PCR kit.
43	Factor V Leiden detection RG Real time PCR kit.



GENOME DIAGNOSTICS PVT. LTD.

(AN ISO 13485 :2012,9001 : 2008 CERTIFIED COMPANY.)

Up Mohal Naryal, KHASRA NO : 427,Opp. Divya Packers,
Old Timber Depot Road, Near Sector 4,Parwanoo

Distt. Solan, Himachal Pradesh-173220 ,INDIA.

Tel No : 00-91-1792-234285, +91 9810037653 Fax : 00-91-1792-234286

E-mail: genome24@rediffmail.com

dharam@vsnl.com

pbpl@vsnl.net

Version : 005

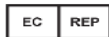
Websites :

www.genomediagnosics.in

www.genome-diagnostics.com

www.genomediagnosics.co.in

www.diagnosticsgenome.com



EMERGO EUROPE

Prinsessegracht 20, 2514 AP , The Hague
The Netherlands